

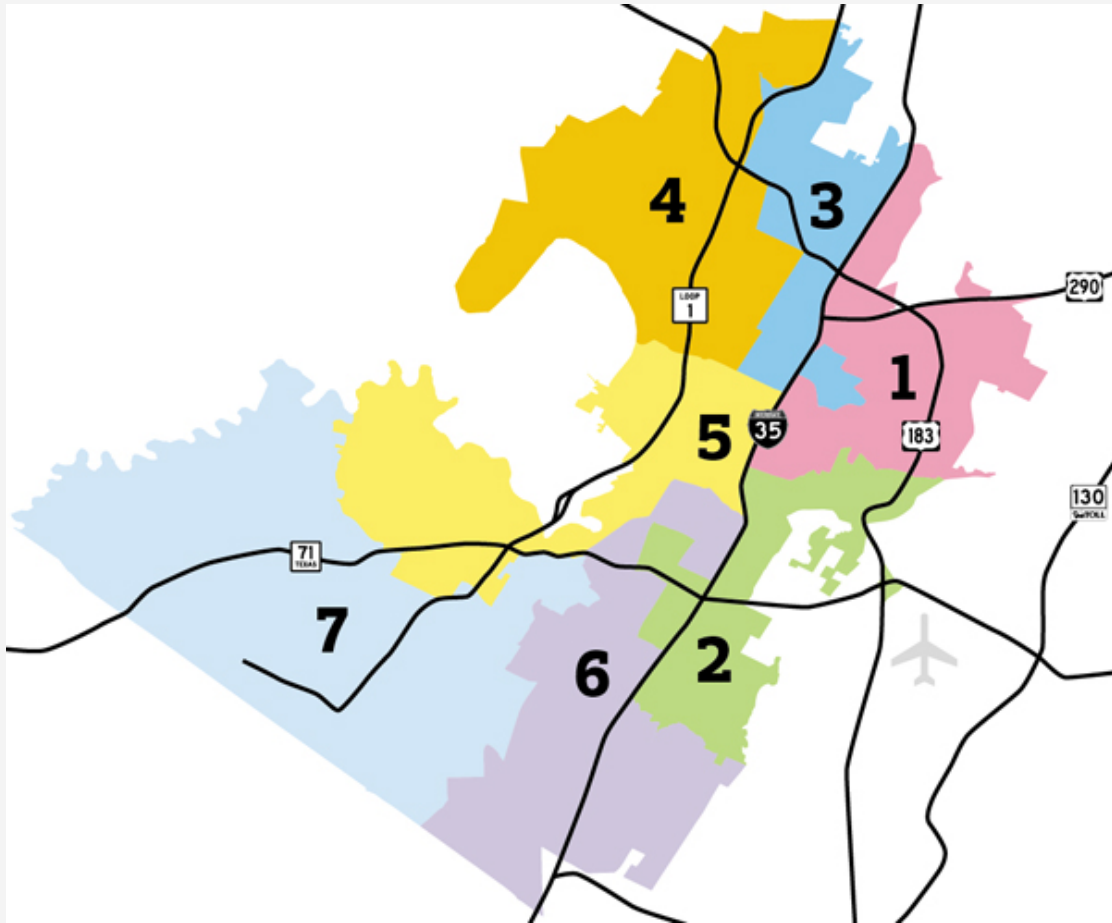
AUSTIN ISD REDISTRICTING

MARCH 10, 2022 BOARD MEETING

Presented By:
Thompson & Horton LLP



What is Redistricting?



Redistricting is the process by which the boundaries of elective districts (e.g., single-member districts) are periodically redrawn in response to changes in population.

Criteria for Drawing SMD Boundaries

Statutory Criteria

THEREFORE under Sections 11.051-11.053, 11.057, 11.061 and 11.062 of the Texas Education Code, and all other applicable federal and state law, BE IT RESOLVED and ORDERED by the Board of Trustees of the Austin Independent School District, the following criteria shall be observed to the greatest extent possible in reconfiguring the District's single-member districts:

1. The District shall keep the total deviation between the largest and smallest single-member district at or within ten (10) percent;
2. Single-member districts shall be as nearly as practicable of equal population in terms of total population according to the 2020 Census;
3. Single-member districts shall be compact to the extent possible and composed of contiguous territory;
4. The racial and language minority status of residents shall be considered only to the narrow extent needed to avoid violating the Fifteenth Amendment and Equal Protection Clause of the Fourteenth Amendment to the United States Constitution, the Voting Rights Act of 1965, as amended, and the aforementioned provisions of the Texas Education Code (i.e., avoid retrogression of minority voting rights by drawing a plan where minority voting strength is not diminished relative to the existing plan);
5. Single-member districts shall be drawn to avoid splitting county election precincts, unless necessary to maintain proper deviation;

Non-Statutory Criteria

6. Where possible, the proposed map shall maintain communities of interest within single-member districts and attempts should be made to avoid splitting neighborhoods when redrawing single-member district lines;
7. Easily identifiable geographic and political boundaries shall be followed when possible;
8. Existing single-member district boundaries shall be preserved to the extent possible;
9. Single-member districts shall preserve incumbent-constituency relations by placing the residence of existing trustees in separate single-member districts; and
10. Where possible, single-member districts shall be drawn to use or account for other political boundaries (such as city or county boundaries).

Non-Statutory Criteria: Survey Results

83%	Maintain communities of interest (such as neighborhoods) within a single district Mantener a las comunidades de interés (como vecindarios) dentro de un solo distrito	Rank: 1.32	153 ✓
59%	Use identifiable geographic boundaries (e.g. roads, creeks, parks) when possible Utilizar límites geográficamente identificables (p. ej.: calles, riachuelos, parques) cuando sea posible	Rank: 2.50	109 ✓
55%	Preserve existing single member district boundaries to degree possible Conservar los límites de los distritos uninominales actuales en la medida de lo posible	Rank: 2.65	101 ✓

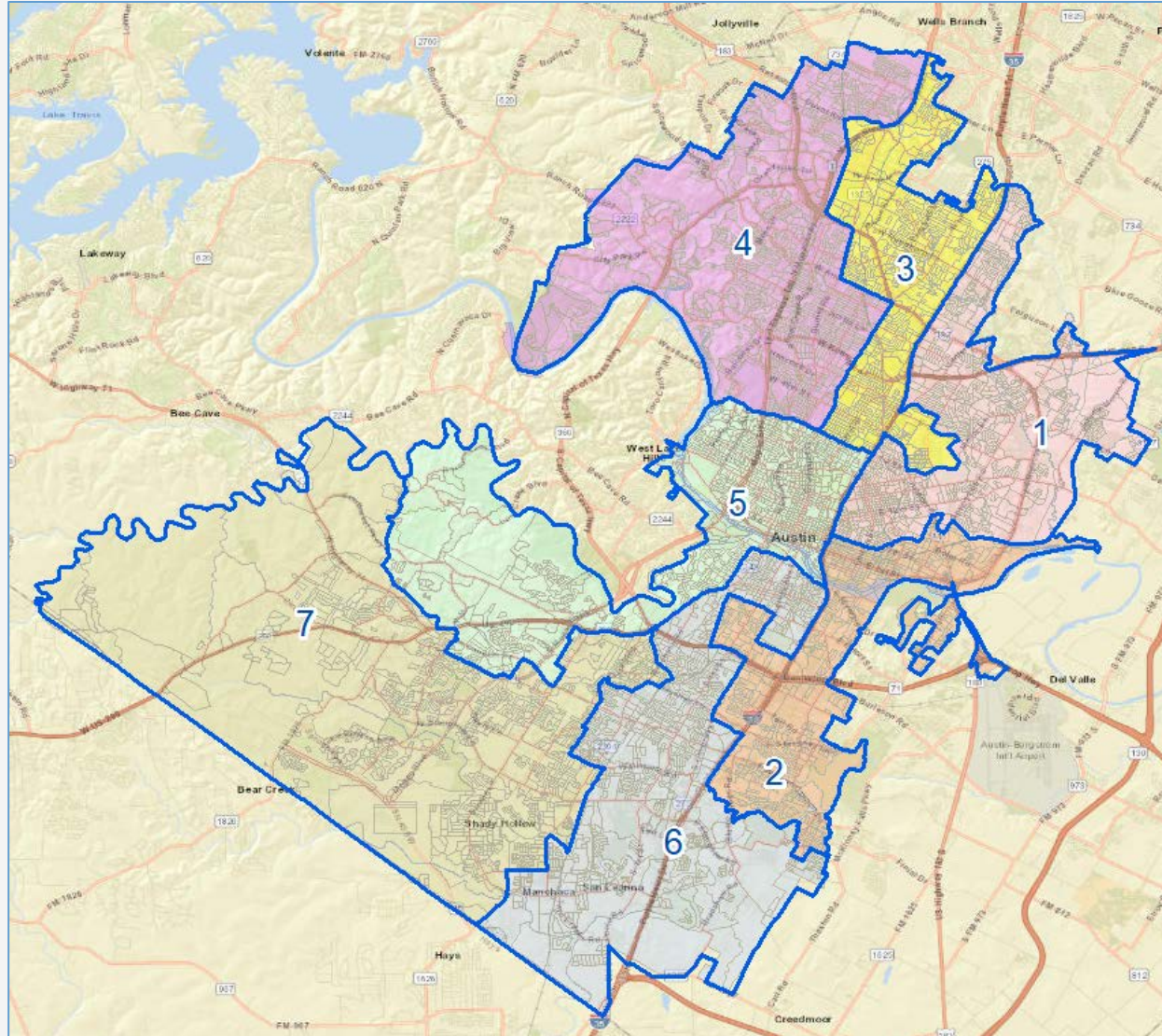
Non-Statutory Criteria: Survey Results

43%	Preserving incumbencies (ensuring the residence of current trustees remain in their current district so that incumbent trustees may serve the remainder of their terms and the new plan may be phased-in) Conservar los cargos actuales (procurando que la residencia de los miembros actuales de la mesa directiva permanezca en su distrito actual para que los miembros de turno de la mesa directiva puedan servir el resto de sus términos y se pueda introducir gradualmente el nuevo plan)	Rank: 3.43	79 ✓
11%	Other Otro	Rank: 3.80	20 ✓
43%	Use or account for other political boundaries (such as polling places or city or county boundaries) Utilizar o tener en cuenta otros límites políticos (como lugares de votación o límites de ciudades o condados)	Rank: 3.87	79 ✓

Discuss Redistricting Criteria

US Census Data Analysis

Current SMD Map (2010 Census Blocks)



2010 Census Totals - Current SMDs

AUSTIN INDEPENDENT SCHOOL DISTRICT 2010 CENSUS TOTALS - CURRENT TRUSTEE DISTRICTS

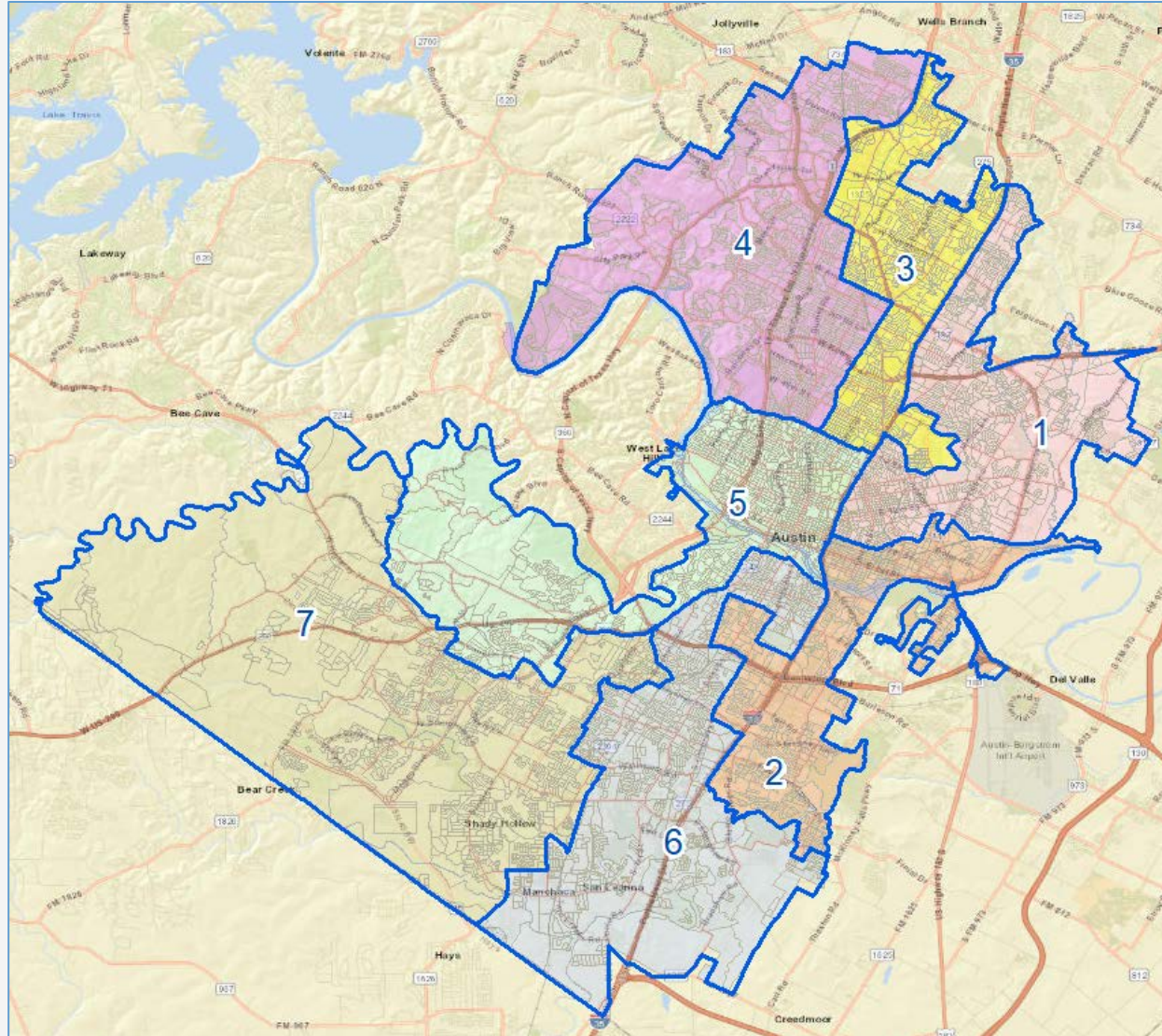
Trustee District	TOTAL POPULATION						TOTAL POPULATION PERCENTAGES					
	Anglo	Asian	Black	Hispanic	Other	Total	Anglo	Asian	Black	Hispanic	Other	Total
1	19,812	1,154	21,273	43,732	1,515	87,486	22.6%	1.3%	24.3%	50.0%	1.7%	100.0%
2	18,515	1,215	6,371	60,288	1,378	87,767	21.1%	1.4%	7.3%	68.7%	1.6%	100.0%
3	30,857	4,813	6,998	43,677	1,775	88,120	35.0%	5.5%	7.9%	49.6%	2.0%	100.0%
4	72,707	5,606	2,315	11,443	2,110	94,181	77.2%	6.0%	2.5%	12.2%	2.2%	100.0%
5	64,156	9,177	2,304	12,184	2,252	90,073	71.2%	10.2%	2.6%	13.5%	2.5%	100.0%
6	46,682	2,029	4,378	38,938	2,087	94,114	49.6%	2.2%	4.7%	41.4%	2.2%	100.0%
7	61,774	5,123	2,779	21,523	2,302	93,501	66.1%	5.5%	3.0%	23.0%	2.5%	100.0%
TOTALS	314,503	29,117	46,418	231,785	13,419	635,242	49.5%	4.6%	7.3%	36.5%	2.1%	100.0%
				7 DIST AVG	89,525		7.7% Percent Differential *					

Trustee District	VOTING AGE POPULATION (VAP) PERCENTAGES						CITIZEN VOTING AGE POPULATION (CVAP) PERCENTAGES					
	Anglo	Asian	Black	Hispanic	Other	Total	Anglo	Asian	Black	Hispanic	Other	Total
1	28.4%	1.5%	25.4%	43.2%	1.6%	100.0%	37.5%	N/A	34.8%	24.3%	3.3%	100%
2	26.7%	1.6%	7.4%	62.8%	1.6%	100.0%	37.6%	N/A	11.2%	47.9%	3.2%	100%
3	41.2%	6.0%	7.7%	43.2%	1.8%	100.0%	58.8%	N/A	11.4%	22.9%	6.9%	100%
4	78.5%	6.1%	2.4%	11.2%	1.8%	100.0%	82.0%	N/A	2.7%	11.0%	4.2%	100%
5	71.3%	10.7%	2.6%	13.1%	2.3%	100.0%	76.1%	N/A	2.5%	12.6%	8.8%	100%
6	55.5%	2.3%	4.3%	36.0%	2.0%	100.0%	61.0%	N/A	4.8%	30.1%	4.1%	100%
7	69.3%	5.2%	3.0%	20.7%	1.8%	100.0%	73.4%	N/A	3.0%	18.8%	4.8%	100%
TOTALS	54.5%	5.0%	7.1%	31.6%	1.8%	100.0%	63.8%	N/A	8.5%	22.5%	5.1%	100%

SOURCE: Total Population and Voting Age Population summarized from 2010 Census PL 94-171 Redistricting Data at the block level.

Citizen Voting Age Population data was extrapolated from 2010 Block Group Data using the 2015-2019 American Community Survey, Asian was included as "Other" in 2010

Current SMD Map (2020 Census Blocks)



2020 Census Totals - Current SMDs

AUSTIN INDEPENDENT SCHOOL DISTRICT

2020 CENSUS TOTALS - CURRENT DISTRICT BOUNDARIES

Trustee District	TOTAL POPULATION						TOTAL POPULATION PERCENTAGES					
	Anglo	Asian	Black	Hispanic	Other	Total	Anglo	Asian	Black	Hispanic	Other	Total
1	28,704	2,309	16,092	43,739	3,441	94,285	30.4%	2.4%	17.1%	46.4%	3.6%	100.0%
2	28,697	2,773	6,427	51,899	3,462	93,258	30.8%	3.0%	6.9%	55.7%	3.7%	100.0%
3	38,404	7,142	6,818	44,224	4,511	101,099	38.0%	7.1%	6.7%	43.7%	4.5%	100.0%
4	73,713	8,551	2,823	15,925	5,580	106,592	69.2%	8.0%	2.6%	14.9%	5.2%	100.0%
5	70,013	13,613	3,331	17,266	5,112	109,335	64.0%	12.5%	3.0%	15.8%	4.7%	100.0%
6	59,984	4,894	6,544	47,251	5,949	124,622	48.1%	3.9%	5.3%	37.9%	4.8%	100.0%
7	65,756	7,326	2,954	25,440	5,781	107,257	61.3%	6.8%	2.8%	23.7%	5.4%	100.0%
TOTALS	365,271	46,608	44,989	245,744	33,836	736,448	49.6%	6.3%	6.1%	33.4%	4.6%	100.0%

7 DIST AVG 105,207 33.6% Percent Differential *

Trustee District	VOTING AGE POPULATION (VAP) PERCENTAGES						CITIZEN VOTING AGE POPULATION (CVAP) PERCENTAGES					
	Anglo	Asian	Black	Hispanic	Other	Total	Anglo	Asian	Black	Hispanic	Other	Total
1	34.6%	2.7%	17.7%	41.5%	3.5%	100.0%	42.3%	2.0%	23.9%	29.2%	2.5%	100%
2	35.5%	3.3%	6.9%	50.7%	3.7%	100.0%	40.1%	2.1%	9.0%	46.8%	2.0%	100%
3	42.4%	7.6%	6.8%	39.0%	4.2%	100.0%	58.0%	4.8%	9.1%	25.8%	2.2%	100%
4	70.6%	8.3%	2.8%	14.1%	4.2%	100.0%	78.4%	3.8%	2.9%	12.5%	2.4%	100%
5	64.4%	13.0%	3.2%	15.4%	4.1%	100.0%	71.4%	7.5%	4.3%	14.6%	2.2%	100%
6	51.7%	4.1%	5.3%	34.5%	4.4%	100.0%	58.5%	2.3%	5.2%	31.7%	2.3%	100%
7	63.7%	6.8%	2.9%	22.1%	4.5%	100.0%	68.5%	4.0%	3.7%	21.9%	1.9%	100%
TOTALS	52.8%	6.7%	6.2%	30.2%	4.1%	100.0%	61.1%	3.9%	7.6%	25.2%	2.2%	100.0%

SOURCE: Total Population and Voting Age Population summarized from 2020 Census PL 94-171 Redistricting Data at the block level.

Citizen Voting Age Population data was extrapolated from 2020 Block Group Data using the 2015-2019 American Community Survey

2010 to 2020 Census Change

AUSTIN INDEPENDENT SCHOOL DISTRICT

2010 to 2020 CENSUS CHANGE												
Trustee District	TOTAL POPULATION						TOTAL POPULATION PERCENTAGES					
	Anglo	Asian	Black	Hispanic	Other	Total	Anglo	Asian	Black	Hispanic	Other	Total
1	8,892	1,155	-5,181	7	1,926	6,799	7.8%	1.1%	-7.2%	-3.6%	1.9%	0.0%
2	10,182	1,558	56	-8,389	2,084	5,491	9.7%	1.6%	-0.4%	-13.0%	2.1%	0.0%
3	7,547	2,329	-180	547	2,736	12,979	3.0%	1.6%	-1.2%	-5.8%	2.4%	0.0%
4	1,006	2,945	508	4,482	3,470	12,411	-8.0%	2.1%	0.2%	2.8%	3.0%	0.0%
5	5,857	4,436	1,027	5,082	2,860	19,262	-7.2%	2.3%	0.5%	2.3%	2.2%	0.0%
6	13,302	2,865	2,166	8,313	3,862	30,508	-1.5%	1.8%	0.6%	-3.5%	2.6%	0.0%
7	3,982	2,203	175	3,917	3,479	13,756	-4.8%	1.4%	-0.2%	0.7%	2.9%	0.0%
TOTALS	50,768	17,491	-1,429	13,959	20,417	101,206	0.1%	1.7%	-1.2%	-3.1%	2.5%	0.0%

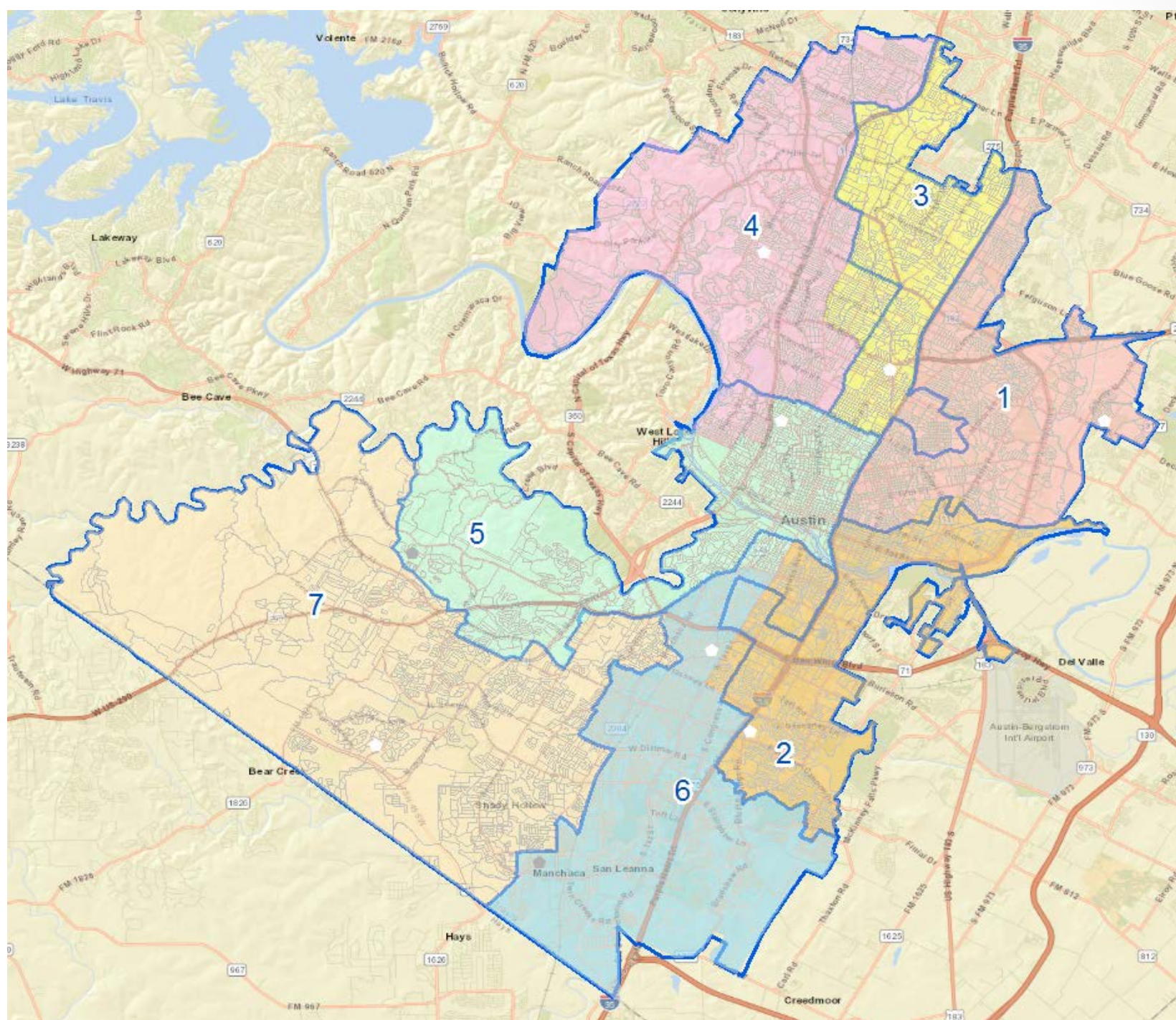
Trustee District	VOTING AGE POPULATION (VAP) PERCENTAGES						CITIZEN VOTING AGE POPULATION (CVAP) PERCENTAGES					
	Anglo	Asian	Black	Hispanic	Other	Total	Anglo	Asian	Black	Hispanic	Other	Total
1	6.3%	1.2%	-7.7%	-1.8%	2.0%	N/A	4.8%	N/A	-10.9%	4.9%	1.2%	N/A
2	8.7%	1.7%	-0.5%	-12.1%	2.1%	N/A	2.5%	N/A	-2.2%	-1.1%	0.9%	N/A
3	1.1%	1.6%	-0.9%	-4.2%	2.4%	N/A	-0.8%	N/A	-2.3%	2.9%	0.1%	N/A
4	-7.9%	2.2%	0.3%	2.9%	2.4%	N/A	-3.6%	N/A	0.2%	1.5%	1.9%	N/A
5	-6.9%	2.3%	0.6%	2.3%	1.8%	N/A	-4.7%	N/A	1.8%	2.0%	0.9%	N/A
6	-3.8%	1.8%	1.0%	-1.5%	2.5%	N/A	-2.5%	N/A	0.4%	1.6%	0.5%	N/A
7	-5.6%	1.5%	-0.1%	1.4%	2.7%	N/A	-4.9%	N/A	0.7%	3.1%	1.1%	N/A
TOTALS	-1.8%	1.7%	-0.9%	-1.3%	2.3%	N/A	-2.7%	N/A	-0.9%	2.7%	1.0%	N/A

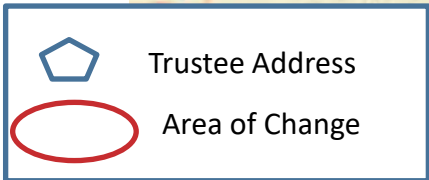
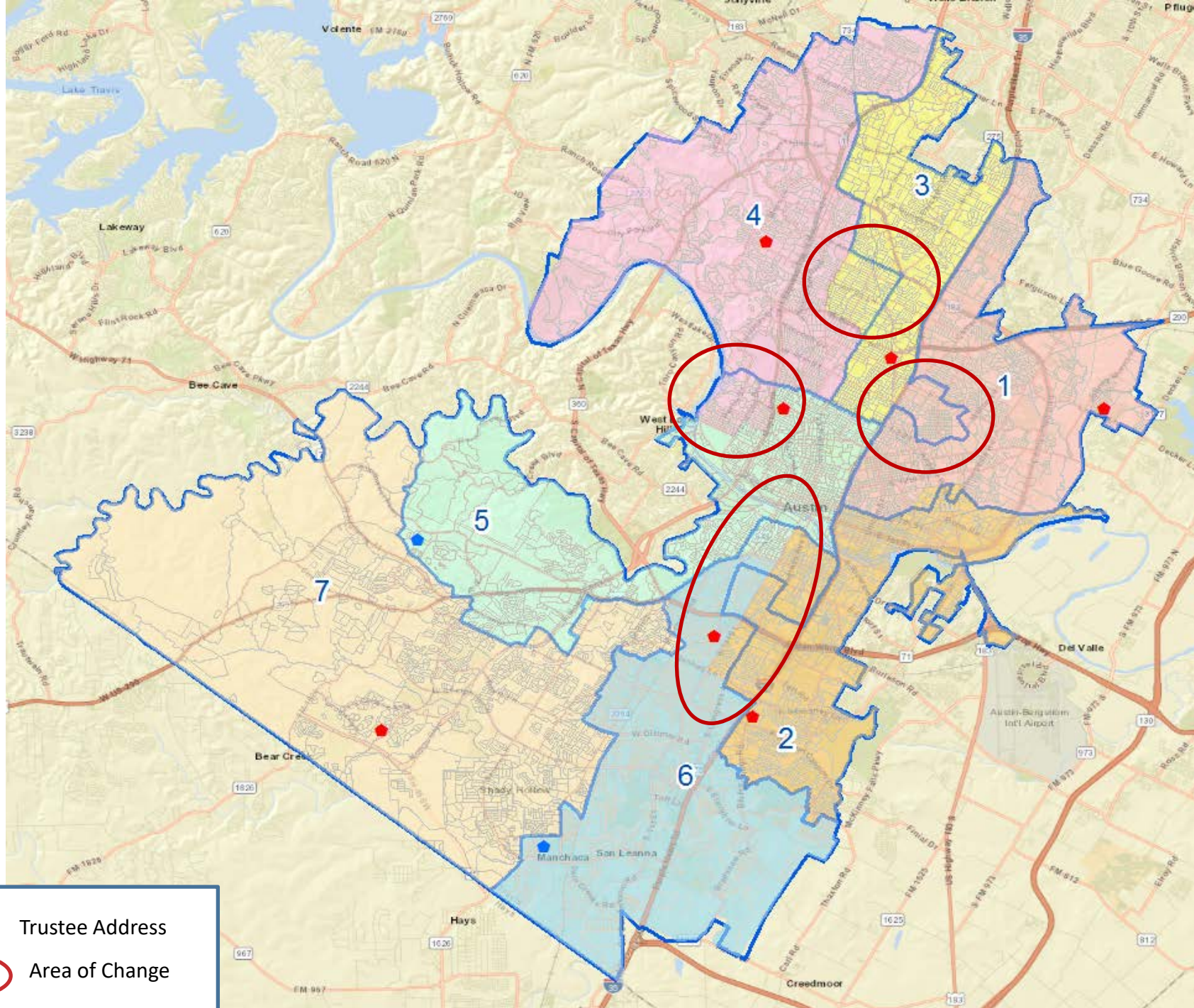
SOURCE: Total Population and Voting Age Population summarized from 2020 Census PL 94-171 Redistricting Data at the block level.

Citizen Voting Age Population (CVAP) data was extrapolated from 2010 Block Group Data using the 2015-2019 American Community Survey

CVAP Change "Other" was calculated as follows: (2020CVAP-Other+2020CVAP-Asian)- (2010CVAP-Other) = **Other**

Initial Proposed Base Map





Initial Base Plan - Census Totals

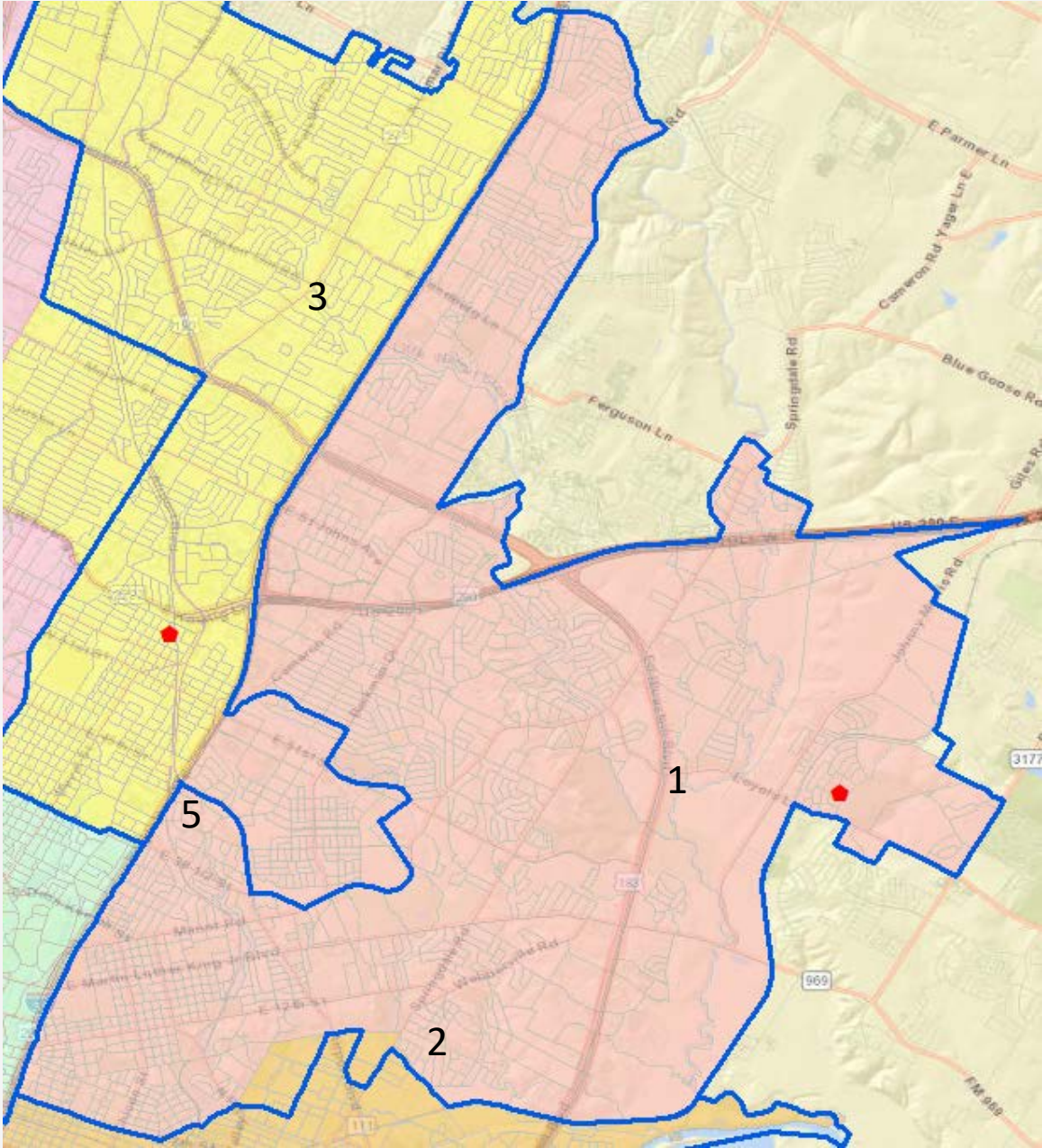
2020 CENSUS TOTALS - PLAN 1												
Trustee District	TOTAL POPULATION						TOTAL POPULATION PERCENTAGES					
	Anglo	Asian	Black	Hispanic	Other	Total	Anglo	Asian	Black	Hispanic	Other	Total
1	33,952	3,301	16,158	45,038	4,001	102,450	33.1%	3.2%	15.8%	44.0%	3.9%	100.0%
2	35,417	3,434	7,374	55,642	4,040	105,907	33.4%	3.2%	7.0%	52.5%	3.8%	100.0%
3	40,572	6,823	6,525	43,907	4,577	102,404	39.6%	6.7%	6.4%	42.9%	4.5%	100.0%
4	70,940	7,996	2,641	14,558	5,170	101,305	70.0%	7.9%	2.6%	14.4%	5.1%	100.0%
5	69,307	13,777	3,390	17,742	5,197	109,413	63.3%	12.6%	3.1%	16.2%	4.7%	100.0%
6	49,327	3,951	5,947	43,417	5,070	107,712	45.8%	3.7%	5.5%	40.3%	4.7%	100.0%
7	65,756	7,326	2,954	25,440	5,781	107,257	61.3%	6.8%	2.8%	23.7%	5.4%	100.0%
TOTALS	365,271	46,608	44,989	245,744	33,836	736,448	49.6%	6.3%	6.1%	33.4%	4.6%	100.0%
		7 DIST AVG		105,207		8.0% Percent Differential *						

Trustee District	VOTING AGE POPULATION (VAP) PERCENTAGES						CITIZEN VOTING AGE POPULATION (CVAP) PERCENTAGES					
	Anglo	Asian	Black	Hispanic	Other	Total	Anglo	Asian	Black	Hispanic	Other	Total
1	37.2%	3.5%	16.4%	39.3%	3.7%	100.0%	44.8%	2.6%	22.7%	27.6%	2.4%	100%
2	38.1%	3.5%	6.8%	47.8%	3.7%	100.0%	43.4%	1.9%	8.8%	43.8%	2.1%	100%
3	43.9%	7.2%	6.4%	38.2%	4.2%	100.0%	59.9%	4.1%	8.4%	25.1%	2.5%	100%
4	71.5%	8.1%	2.7%	13.6%	4.1%	100.0%	78.8%	4.1%	3.0%	11.9%	2.2%	100%
5	63.9%	13.1%	3.2%	15.7%	4.2%	100.0%	71.0%	7.2%	4.3%	15.3%	2.2%	100%
6	49.5%	3.8%	5.6%	36.7%	4.4%	100.0%	56.2%	2.5%	5.2%	33.9%	2.2%	100%
7	63.7%	6.8%	2.9%	22.1%	4.5%	100.0%	68.5%	4.0%	3.7%	21.9%	1.9%	100%
TOTALS	52.8%	6.7%	6.2%	30.2%	4.1%	100.0%	61.1%	3.9%	7.6%	25.2%	2.2%	100%

SOURCE: Total Population and Voting Age Population summarized from 2020 Census PL 94-171 Redistricting Data at the block level.

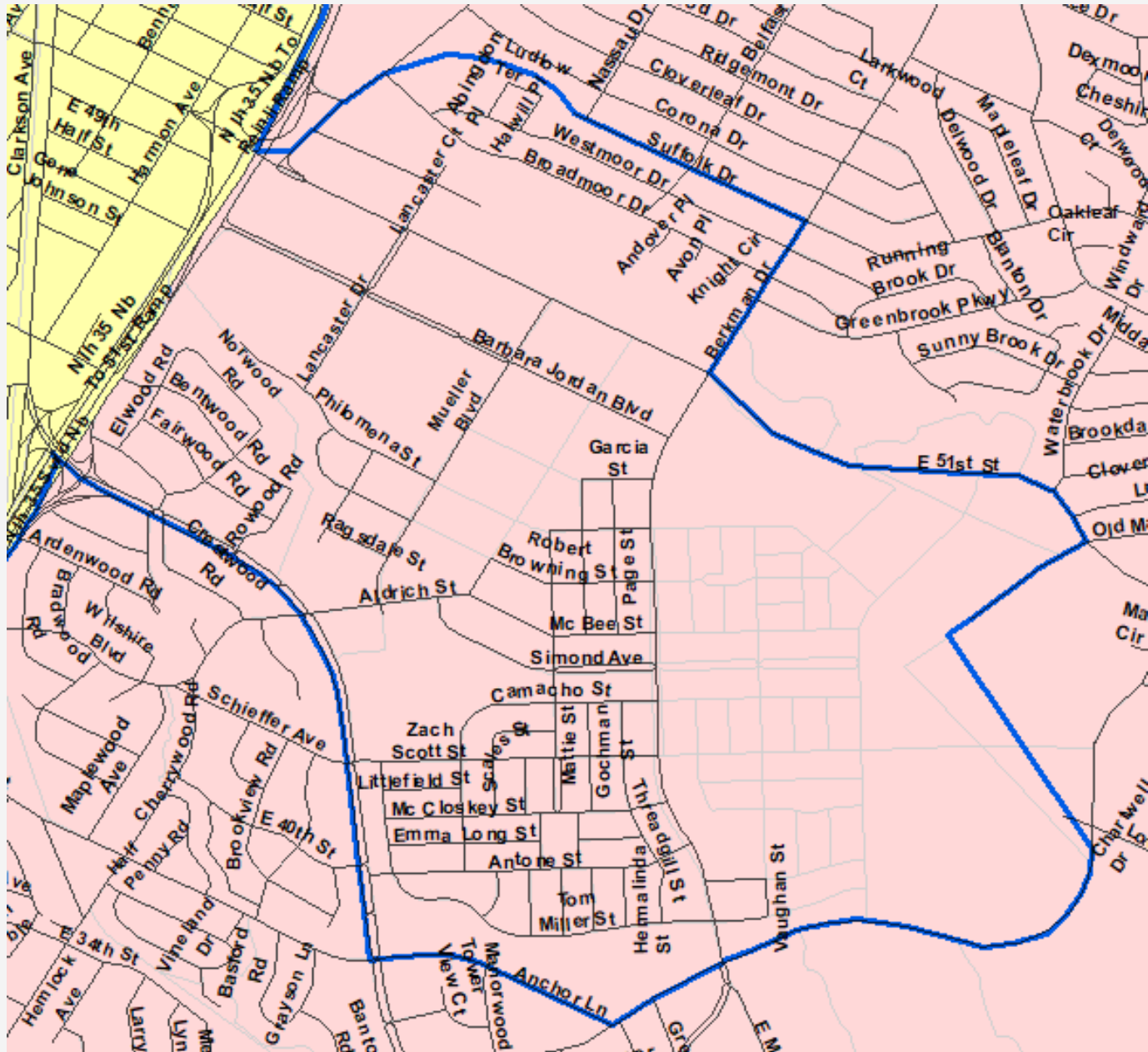
Citizen Voting Age Population data was extrapolated from 2020 Block Group Data using the 2015-2019 American Community Survey

Plan 1 vs. Current – SMD 1

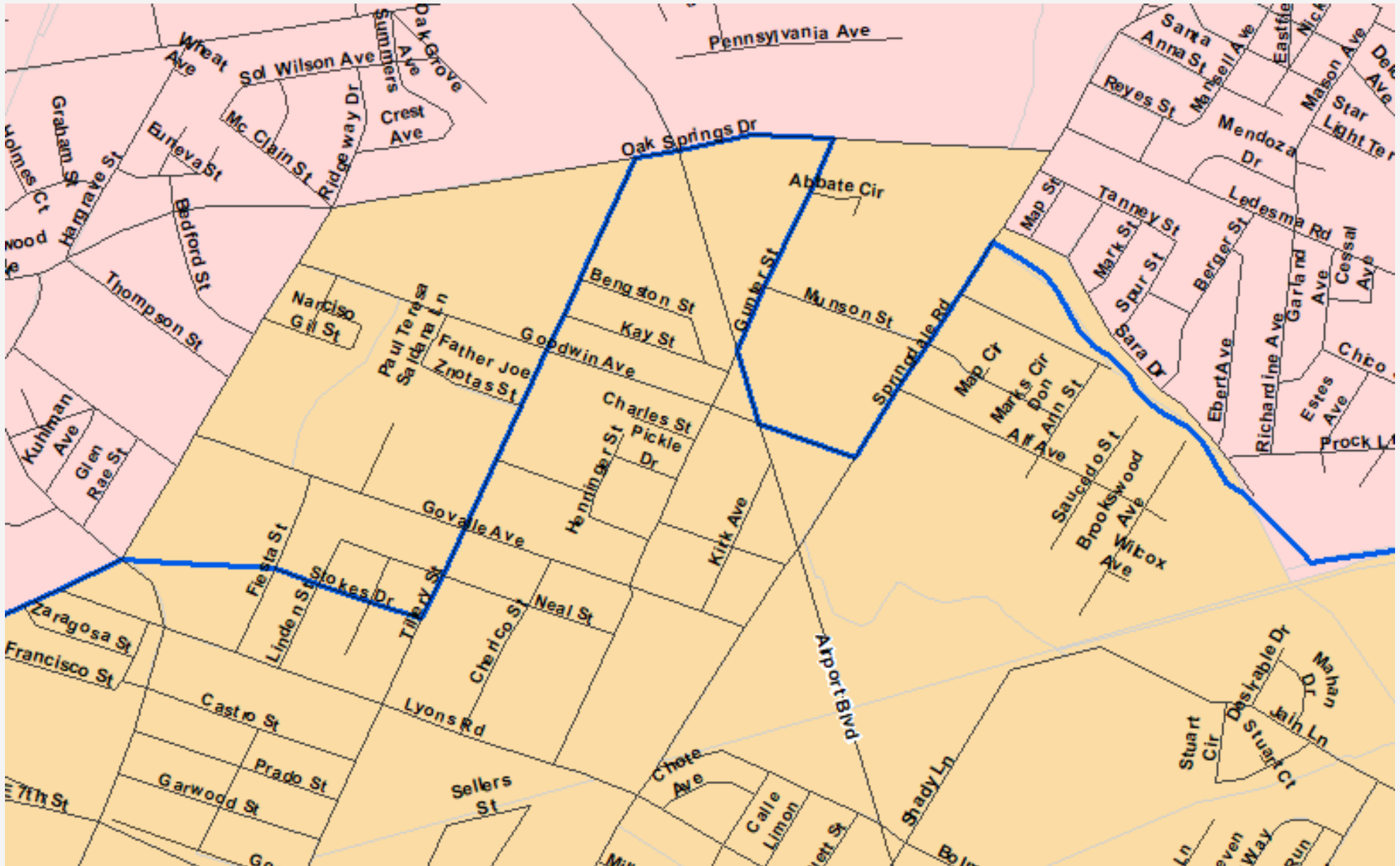


— Current Boundary

Plan 1 vs. Current - SMD 1



Plan 1 vs. Current – SMD 1



— Current Boundary

District 1 – Plan Comparison

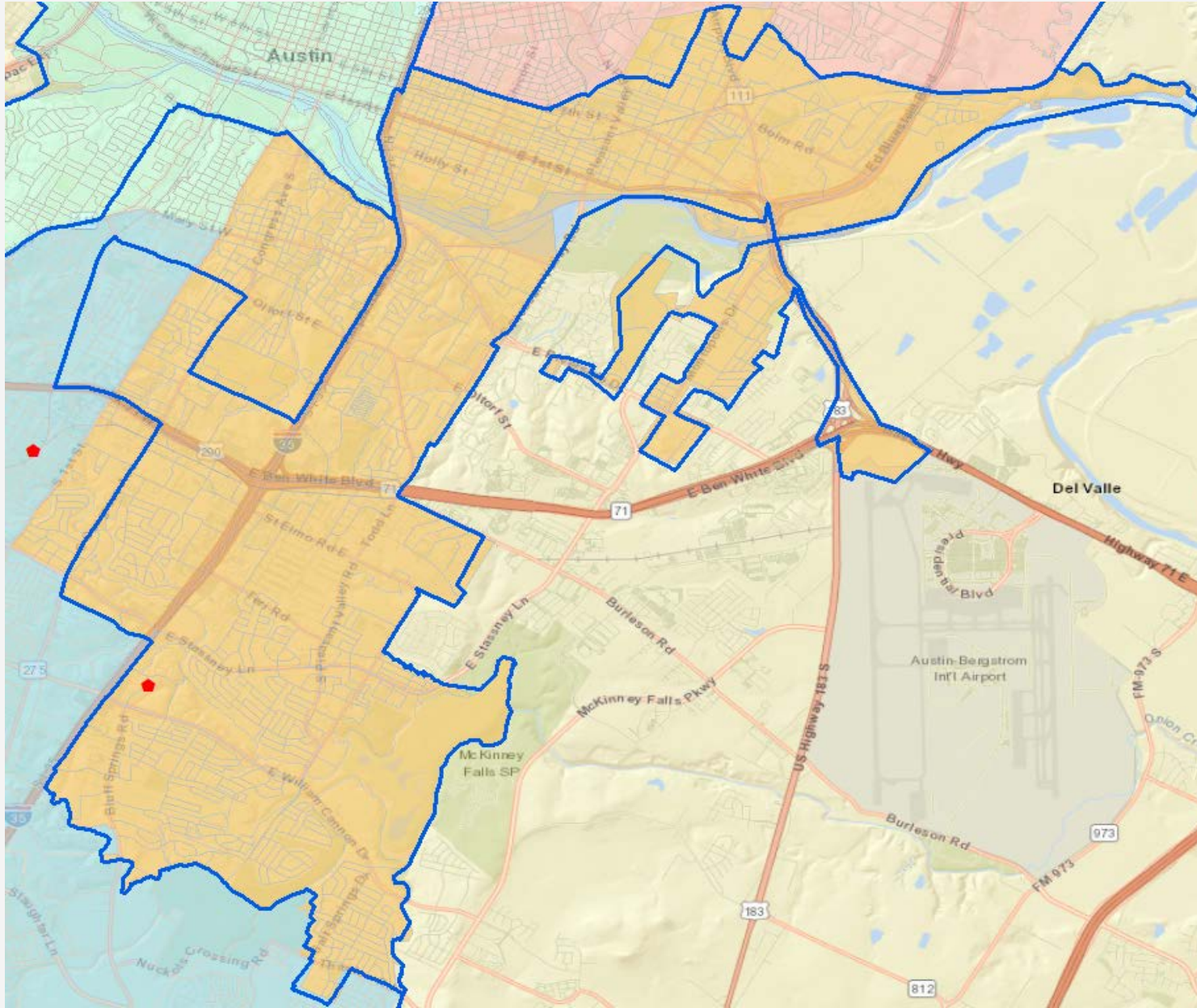
DISTRICT 1 - Plan Comparison			
Category	2010 Census Totals	2020 Census Totals	Plan 1
Population Totals			
Total Anglo Population	19,812	28,704	33,952
Total Asian Population	1,154	2,309	3,301
Total Black Population	21,273	16,092	16,158
Total Hispanic Population	43,732	43,739	45,038
Total Other Population	1,515	3,441	4,001
Total Population	87,486	94,285	102,450
Total Population Percentages			
Total Anglo Population	22.6%	30.4%	33.1%
Total Asian Population	1.3%	2.4%	3.2%
Total Black Population	24.3%	17.1%	15.8%
Total Hispanic Population	50.0%	46.4%	44.0%
Total Other Population	1.7%	3.6%	3.9%
Total Population	100.0%	100.0%	100.0%
Voting Age Population Percentages			
Total Anglo VAP	28.4%	34.6%	37.2%
Total Asian VAP	1.5%	2.7%	3.5%
Total Black VAP	25.4%	17.7%	16.4%
Total Hispanic VAP	43.2%	41.5%	39.3%
Total Other VAP	1.6%	3.5%	3.7%
Total VAP	100.0%	100.0%	100.0%
Citizen Voting Age Population Percentages			
Total Anglo CVAP	37.5%	42.3%	44.8%
Total Asian CVAP	N/A	2.0%	2.6%
Total Black CVAP	34.8%	23.9%	22.7%
Total Hispanic CVAP	24.3%	29.2%	27.6%
Total Other CVAP	3.3%	2.5%	2.4%
Total CVAP	100.0%	100.0%	100.0%

SOURCE: Total Population and Voting Age Population summarized from 2020 Census PL 94-171 Redistricting Data at the block level.

Citizen Voting Age Population (CVAP) data was extrapolated from 2010 Block Group Data using the 2015-2019 American Community Survey

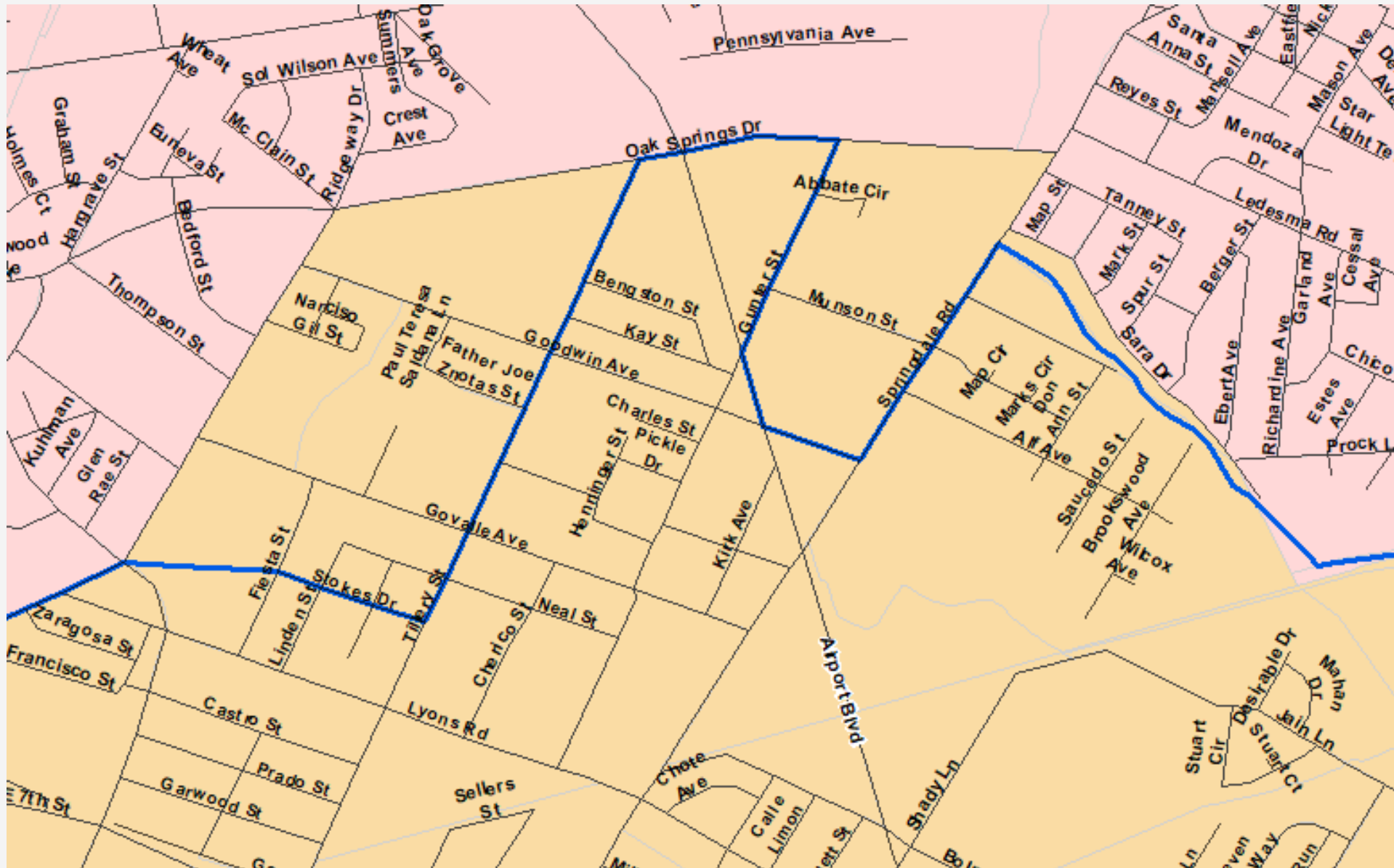
CVAP Change "Other" was calculated as follows:
 $(2020CVAP-Other+2020CVAP-Asian)-(2010CVAP-Other)$
 = Other

Plan 1 vs. Current – SMD 2



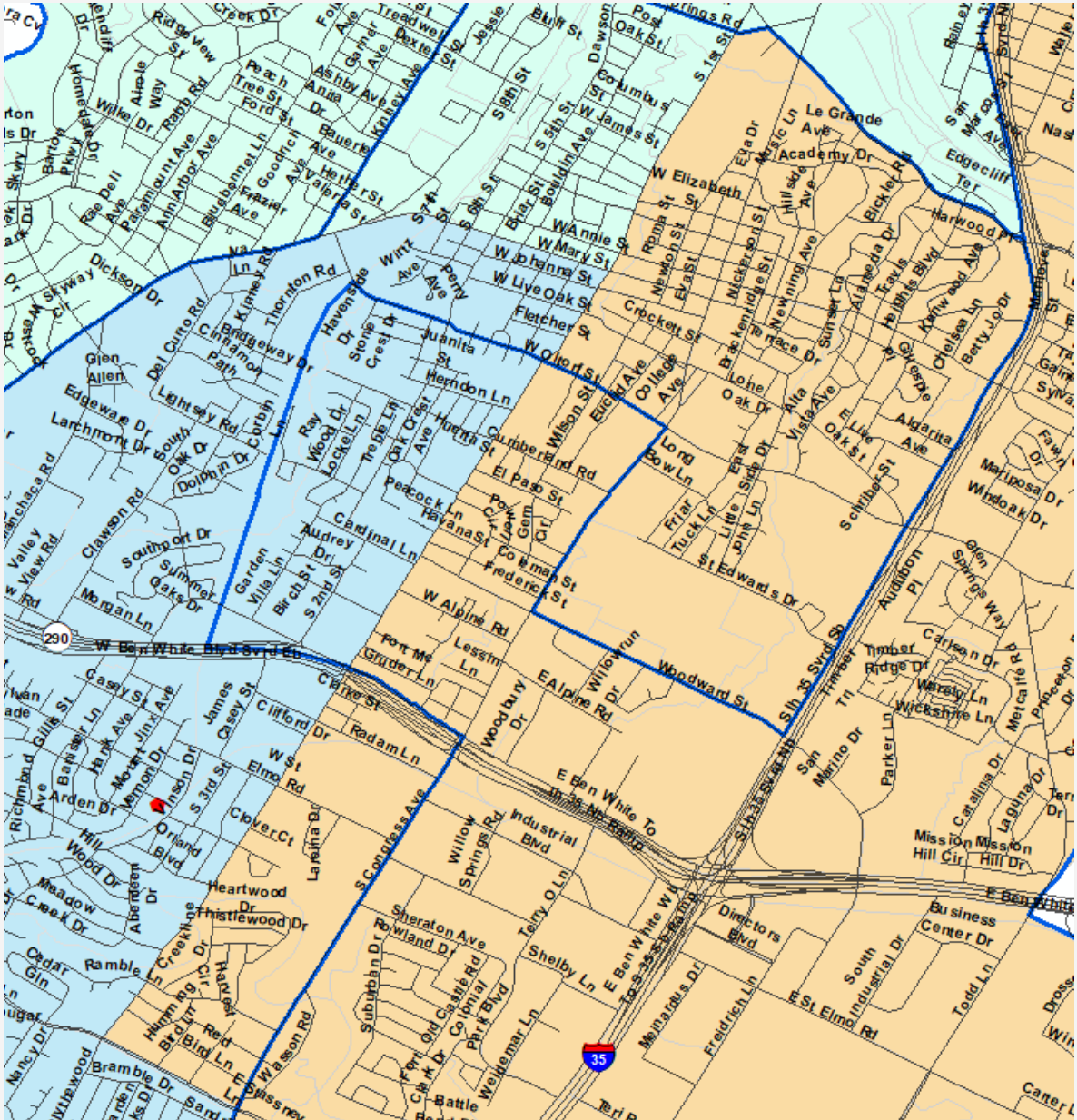
— Current Boundary

Plan 1 vs. Current – SMD 2



Current Boundary

Plan 1 vs. Current - SMD 2



Current Boundary

District 2 – Plan Comparison

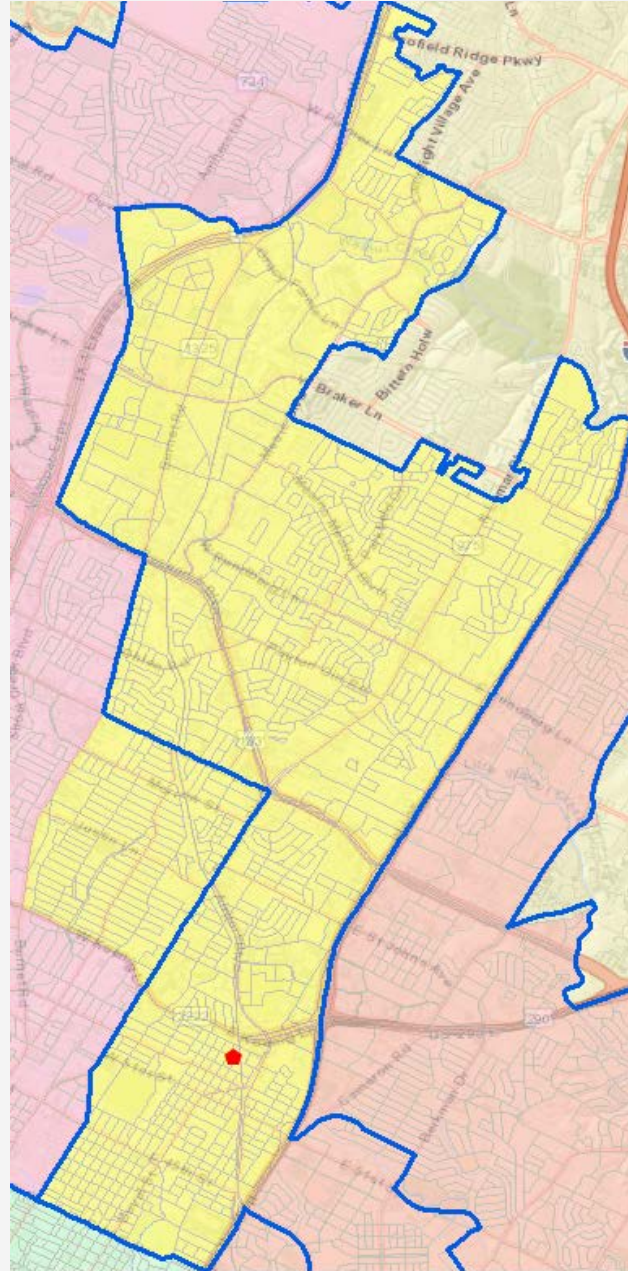
DISTRICT 2 - Plan Comparison			
Category	2010 Census Totals	2020 Census Totals	Plan 1
Population Totals			
Total Anglo Population	18,515	28,697	35,417
Total Asian Population	1,215	2,773	3,434
Total Black Population	6,371	6,427	7,374
Total Hispanic Population	60,288	51,899	55,642
Total Other Population	1,378	3,462	4,040
Total Population	87,767	93,258	105,907
Total Population Percentages			
Total Anglo Population	21.1%	30.8%	33.4%
Total Asian Population	1.4%	3.0%	3.2%
Total Black Population	7.3%	6.9%	7.0%
Total Hispanic Population	68.7%	55.7%	52.5%
Total Other Population	1.6%	3.7%	3.8%
Total Population	100.0%	100.0%	100.0%
Voting Age Population Percentages			
Total Anglo VAP	26.7%	35.5%	38.1%
Total Asian VAP	1.6%	3.3%	3.5%
Total Black VAP	7.4%	6.9%	6.8%
Total Hispanic VAP	62.8%	50.7%	47.8%
Total Other VAP	1.6%	3.7%	3.7%
Total VAP	100.0%	100.0%	100.0%
Citizen Voting Age Population Percentages			
Total Anglo CVAP	37.6%	40.1%	43.4%
Total Asian CVAP	N/A	2.1%	1.9%
Total Black CVAP	11.2%	9.0%	8.8%
Total Hispanic CVAP	47.9%	46.8%	43.8%
Total Other CVAP	3.2%	2.0%	2.1%
Total CVAP	100.0%	100.0%	100.0%

SOURCE: Total Population and Voting Age Population summarized from 2020 Census PL 94-171 Redistricting Data at the block level.

Citizen Voting Age Population (CVAP) data was extrapolated from 2010 Block Group Data using the 2015-2019 American Community Survey

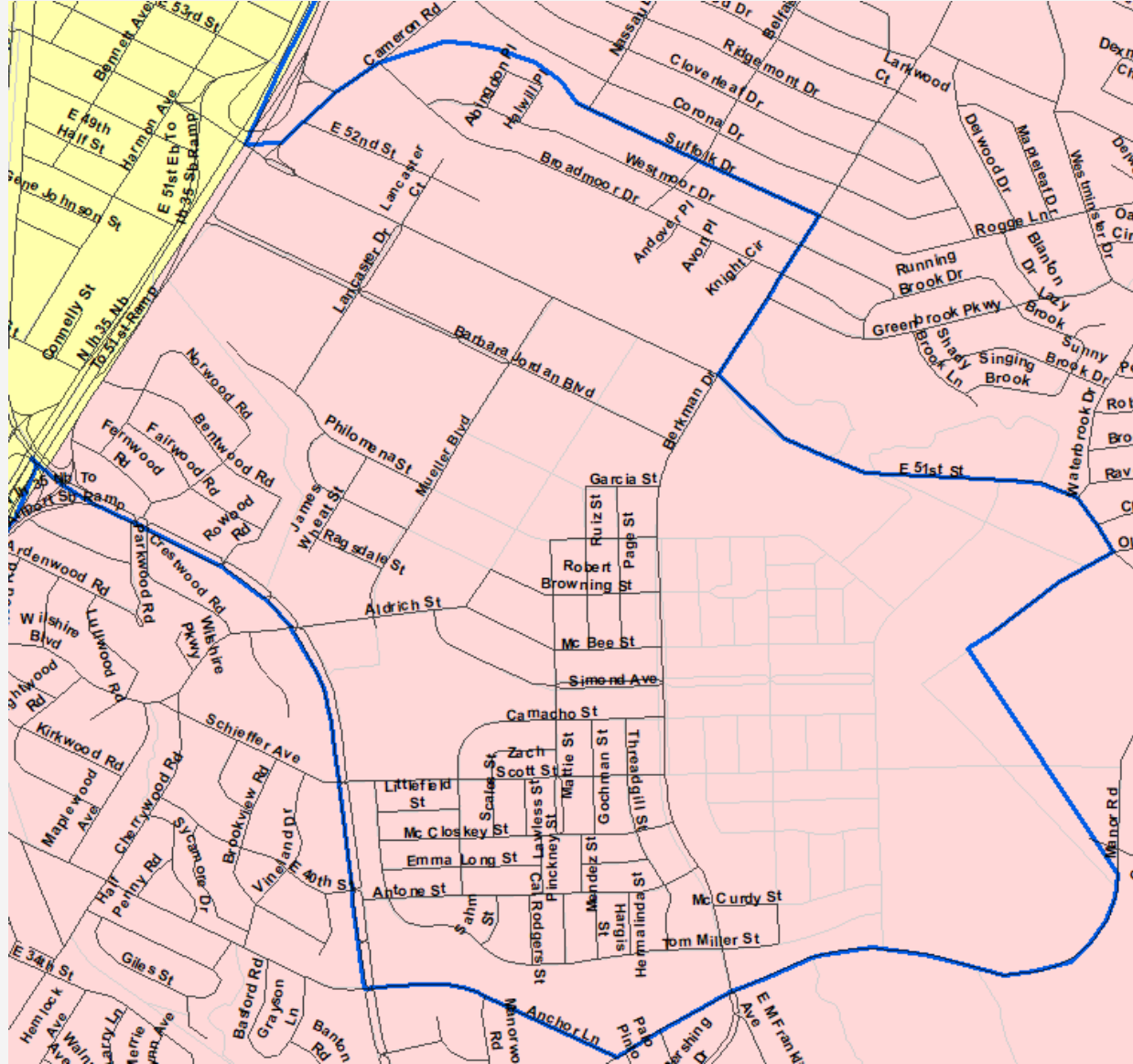
CVAP Change "Other" was calculated as follows:
 $(2020CVAP-Other+2020CVAP-Asian)-(2010CVAP-Other)$
 = **Other**

Plan 1 vs. Current – SMD 3

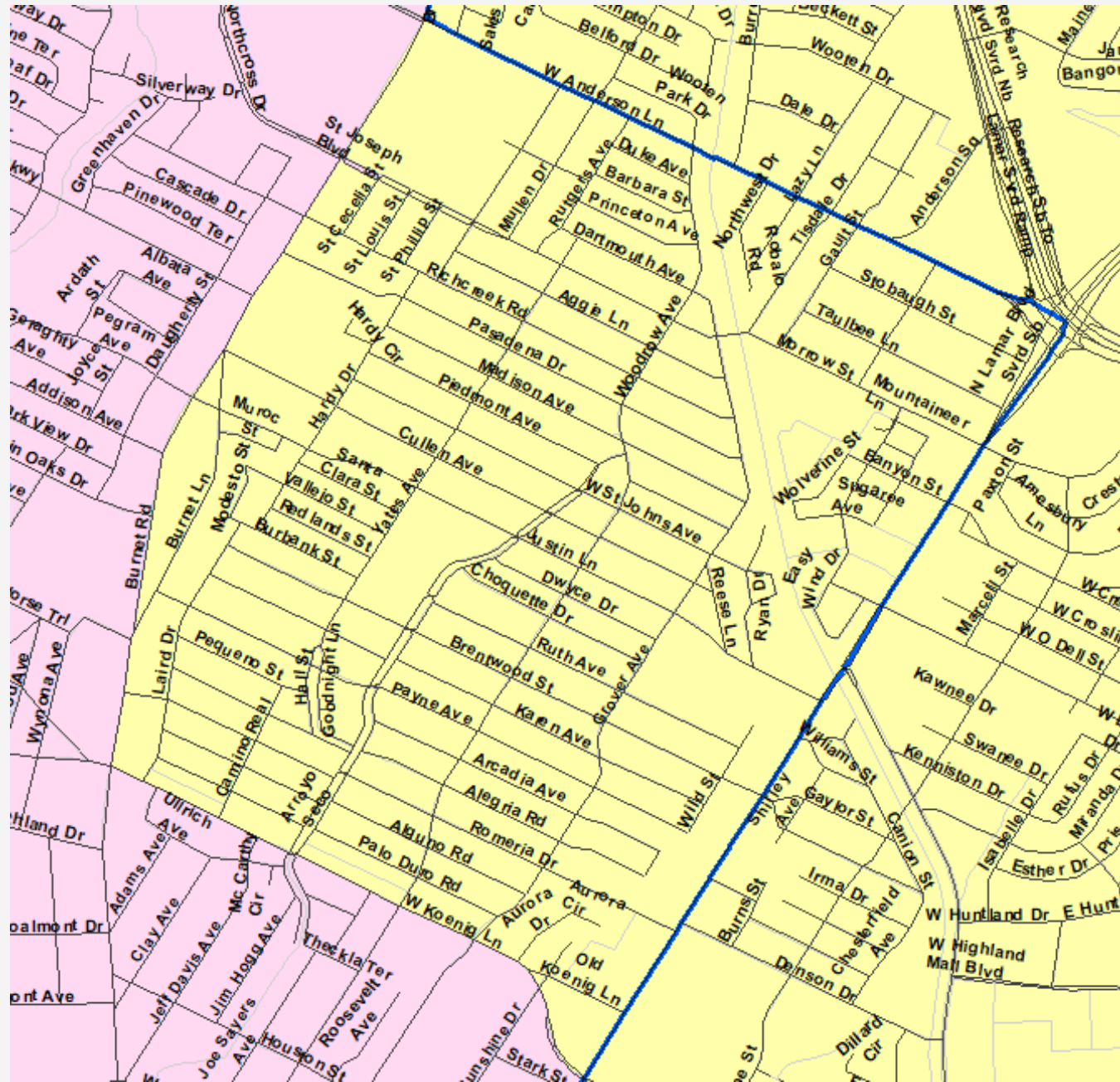


— Current Boundary

Plan 1 vs. Current – SMD 3



Plan 1 vs. Current – SMD 3



— Current Boundary

District 3 – Plan Comparison

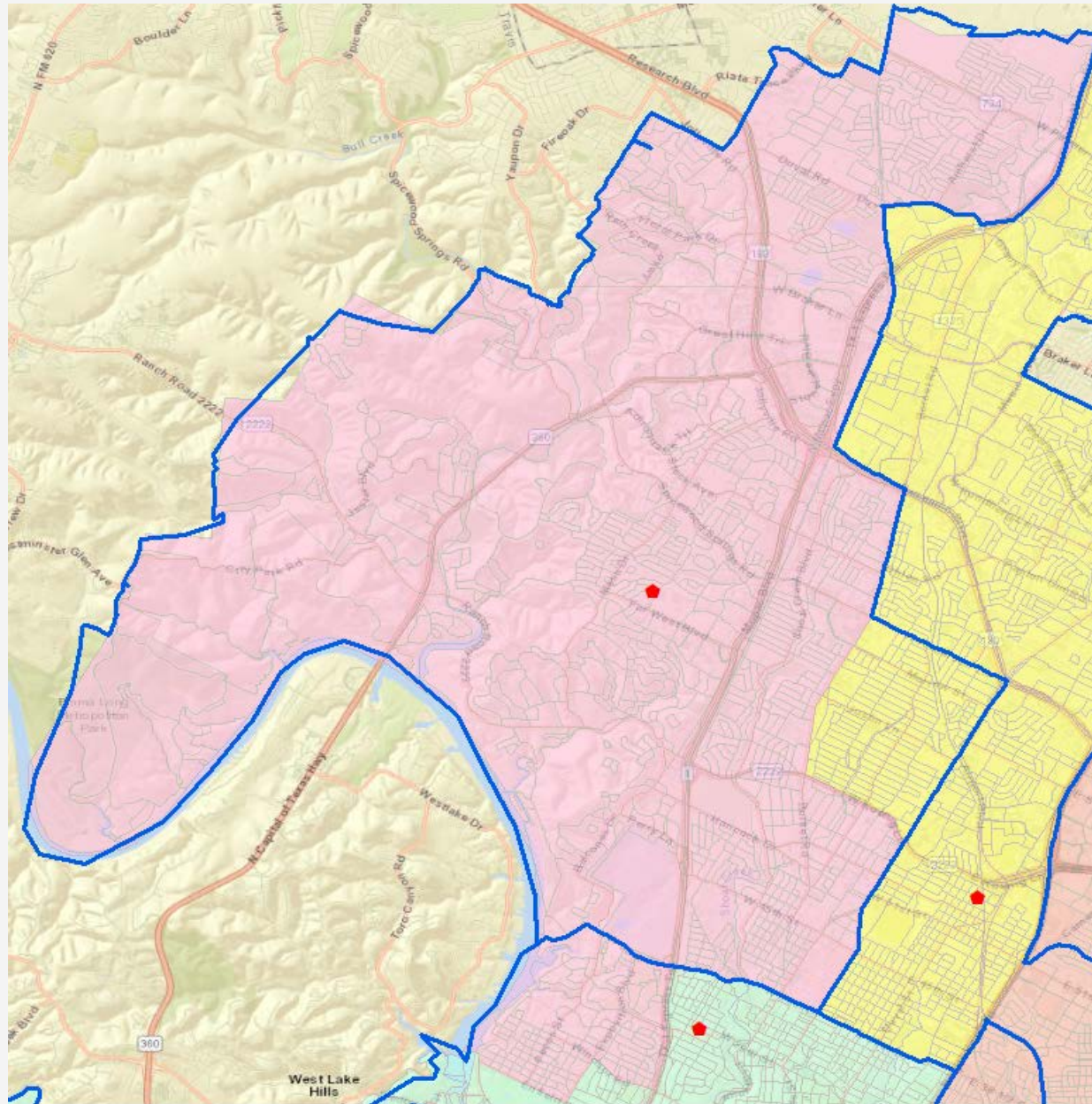
DISTRICT 3 - Plan Comparison			
Category	2010 Census Totals	2020 Census Totals	Plan 1
Population Totals			
Total Anglo Population	30,857	38,404	40,572
Total Asian Population	4,813	7,142	6,823
Total Black Population	6,998	6,818	6,525
Total Hispanic Population	43,677	44,224	43,907
Total Other Population	1,775	4,511	4,577
Total Population	88,120	101,099	102,404
Total Population Percentages			
Total Anglo Population	35.0%	38.0%	39.6%
Total Asian Population	5.5%	7.1%	6.7%
Total Black Population	7.9%	6.7%	6.4%
Total Hispanic Population	49.6%	43.7%	42.9%
Total Other Population	2.0%	4.5%	4.5%
Total Population	100.0%	100.0%	100.0%
Voting Age Population Percentages			
Total Anglo VAP	41.2%	42.4%	43.9%
Total Asian VAP	6.0%	7.6%	7.2%
Total Black VAP	7.7%	6.8%	6.4%
Total Hispanic VAP	43.2%	39.0%	38.2%
Total Other VAP	1.8%	4.2%	4.2%
Total VAP	100.0%	100.0%	100.0%
Citizen Voting Age Population Percentages			
Total Anglo CVAP	58.8%	58.0%	59.9%
Total Asian CVAP	N/A	4.8%	4.1%
Total Black CVAP	11.4%	9.1%	8.4%
Total Hispanic CVAP	22.9%	25.8%	25.1%
Total Other CVAP	6.9%	2.2%	2.5%
Total CVAP	100.0%	100.0%	100.0%

SOURCE: Total Population and Voting Age Population summarized from 2020 Census PL 94-171 Redistricting Data at the block level.

Citizen Voting Age Population (CVAP) data was extrapolated from 2010 Block Group Data using the 2015-2019 American Community Survey

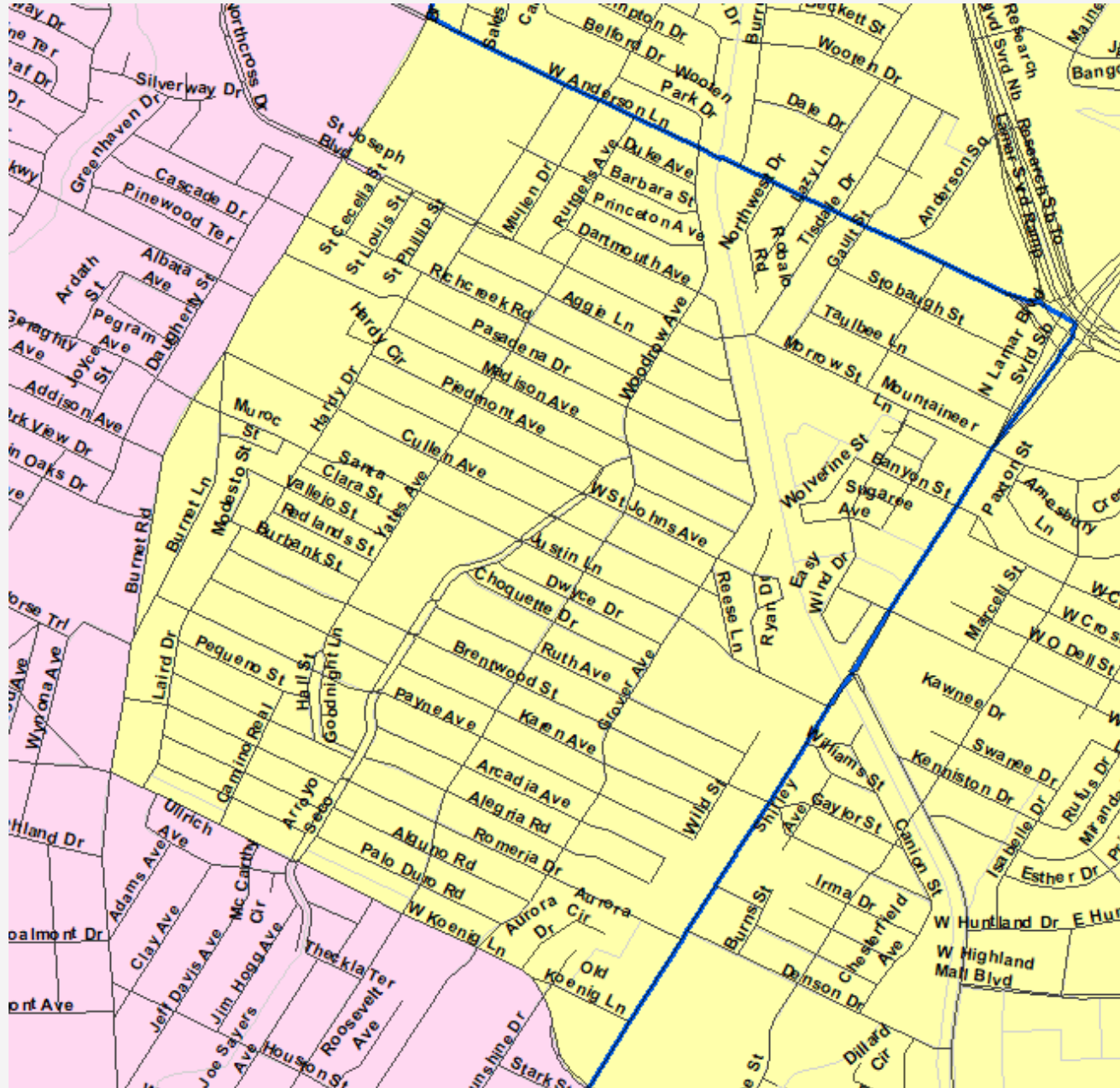
CVAP Change "Other" was calculated as follows:
 $(2020CVAP-Other+2020CVAP-Asian)-(2010CVAP-Other)$
 = **Other**

Plan 1 vs. Current – SMD 4



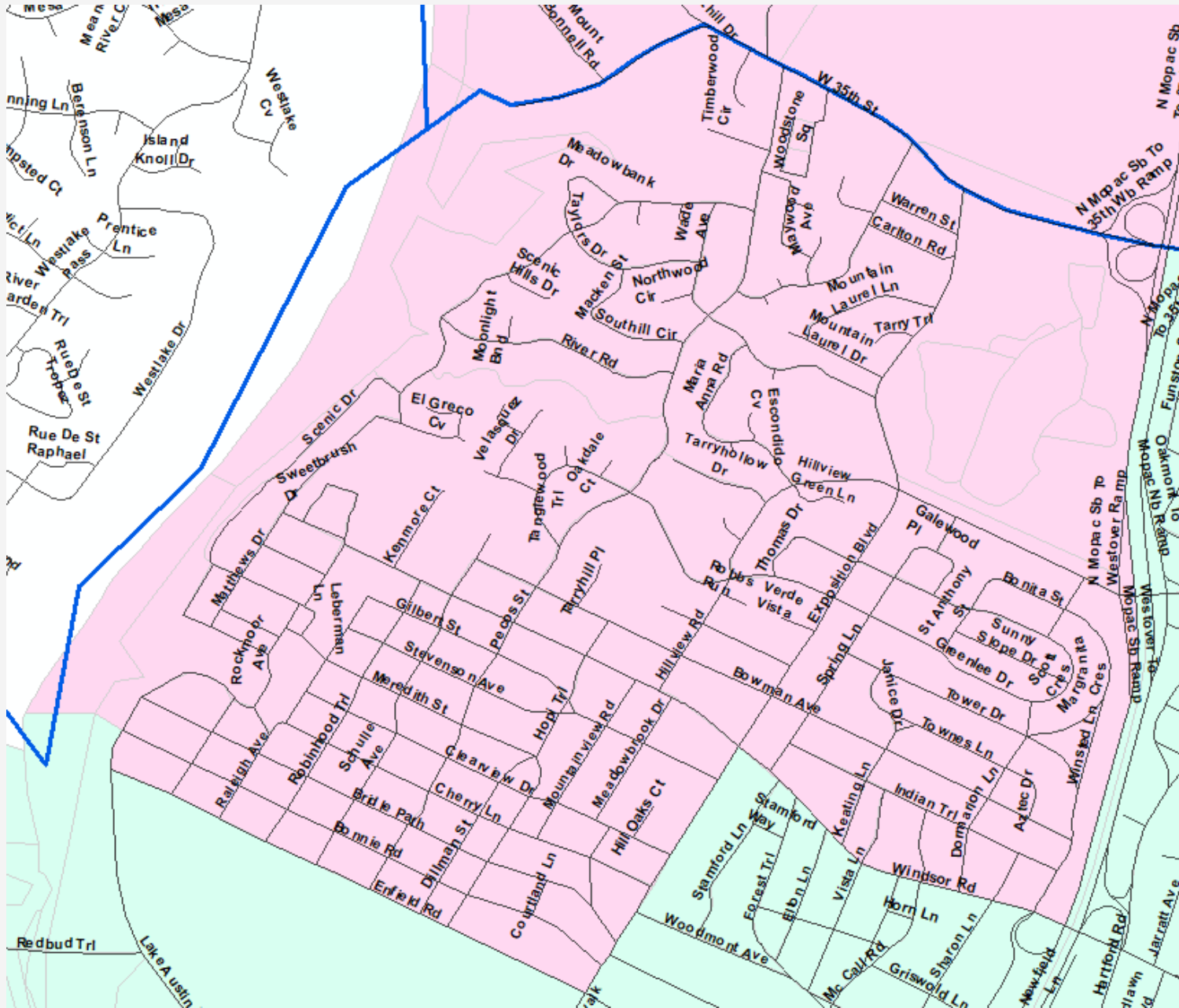
— Current Boundary

Plan 1 vs. Current – SMD 4



Current Boundary

Plan 1 vs. Current – SMD 4



District 4 – Plan Comparison

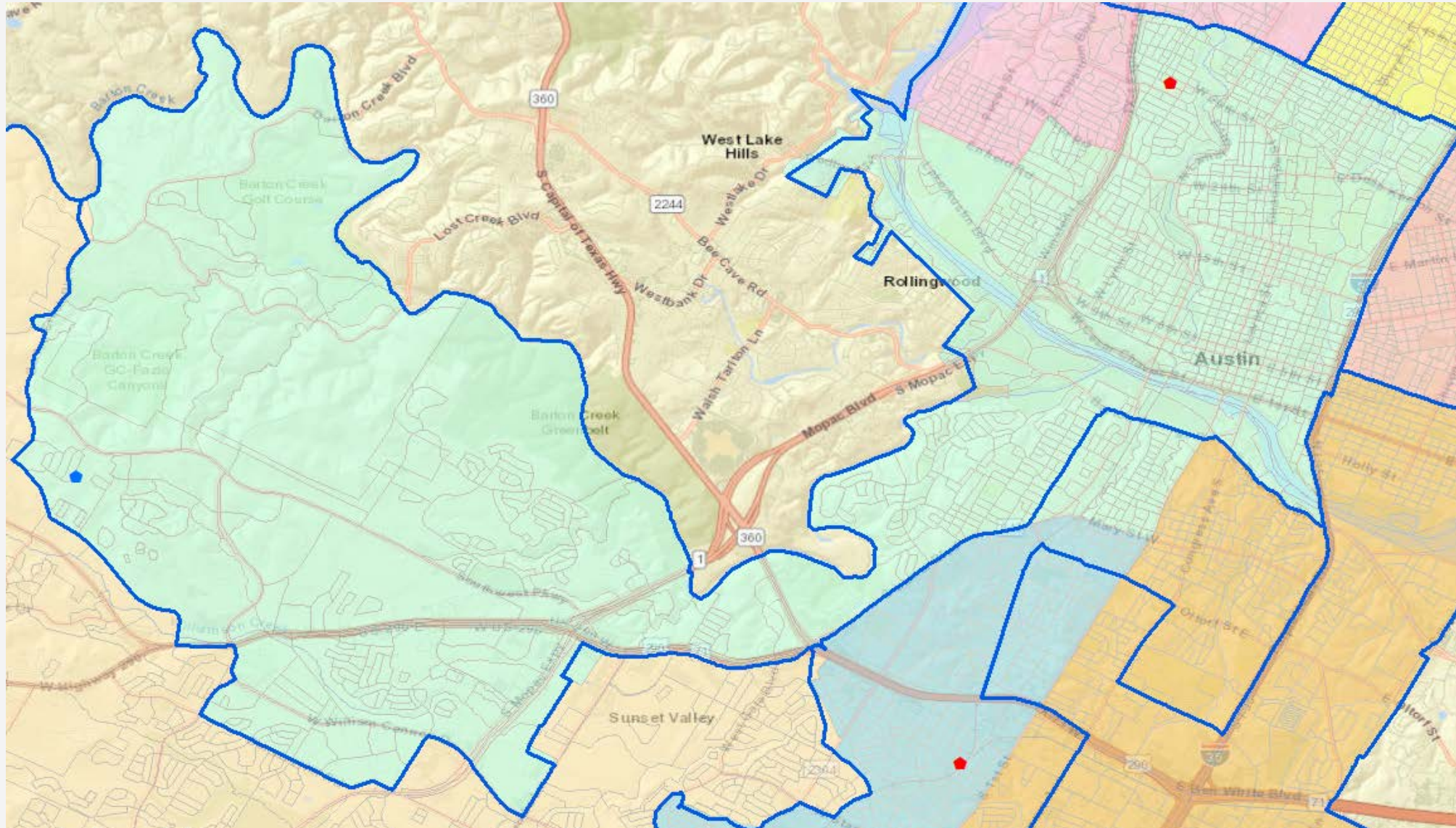
DISTRICT 4 - Plan Comparison			
Category	2010 Census Totals	2020 Census Totals	Plan 1
Population Totals			
Total Anglo Population	72,707	73,713	70,940
Total Asian Population	5,606	8,551	7,996
Total Black Population	2,315	2,823	2,641
Total Hispanic Population	11,443	15,925	14,558
Total Other Population	2,110	5,580	5,170
Total Population	94,181	106,592	101,305
Total Population Percentages			
Total Anglo Population	77.2%	69.2%	70.0%
Total Asian Population	6.0%	8.0%	7.9%
Total Black Population	2.5%	2.6%	2.6%
Total Hispanic Population	12.2%	14.9%	14.4%
Total Other Population	2.2%	5.2%	5.1%
Total Population	100.0%	100.0%	100.0%
Voting Age Population Percentages			
Total Anglo VAP	78.5%	70.6%	71.5%
Total Asian Population	6.1%	8.3%	8.1%
Total Black VAP	2.4%	2.8%	2.7%
Total Hispanic VAP	11.2%	14.1%	13.6%
Total Other VAP	1.8%	4.2%	4.1%
Total VAP	100.0%	100.0%	100.0%
Citizen Voting Age Population Percentages			
Total Anglo CVAP	82.0%	78.4%	78.8%
Total Asian CVAP	N/A	3.8%	4.1%
Total Black CVAP	2.7%	2.9%	3.0%
Total Hispanic CVAP	11.0%	12.5%	11.9%
Total Other CVAP	4.2%	2.4%	2.2%
Total CVAP	100.0%	100.0%	100.0%

SOURCE: Total Population and Voting Age Population summarized from 2020 Census PL 94-171 Redistricting Data at the block level.

Citizen Voting Age Population (CVAP) data was extrapolated from 2010 Block Group Data using the 2015-2019 American Community Survey

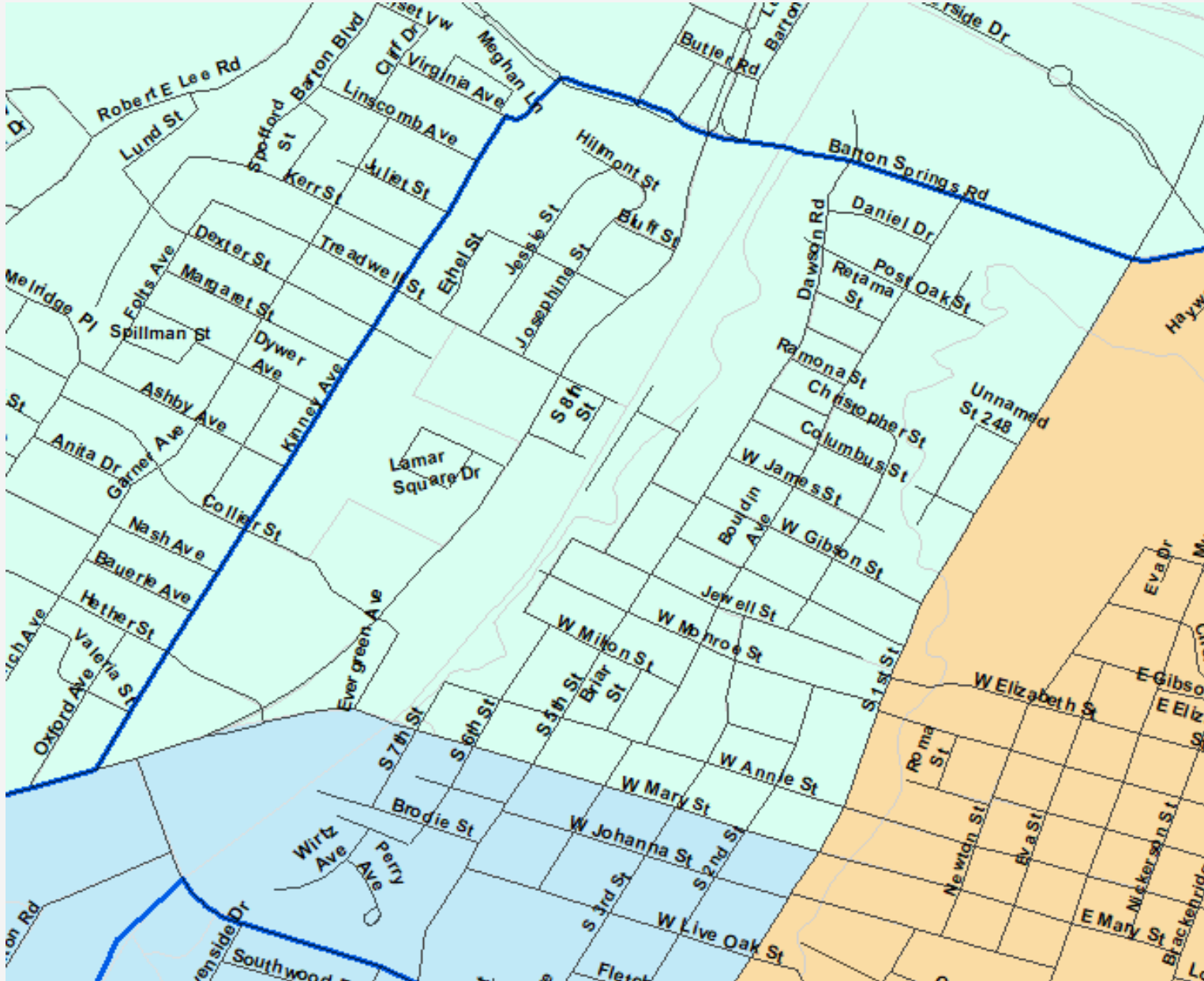
CVAP Change "Other" was calculated as follows:
 $(2020CVAP-Other+2020CVAP-Asian)-(2010CVAP-Other)$
 = **Other**

Plan 1 vs. Current – SMD 5



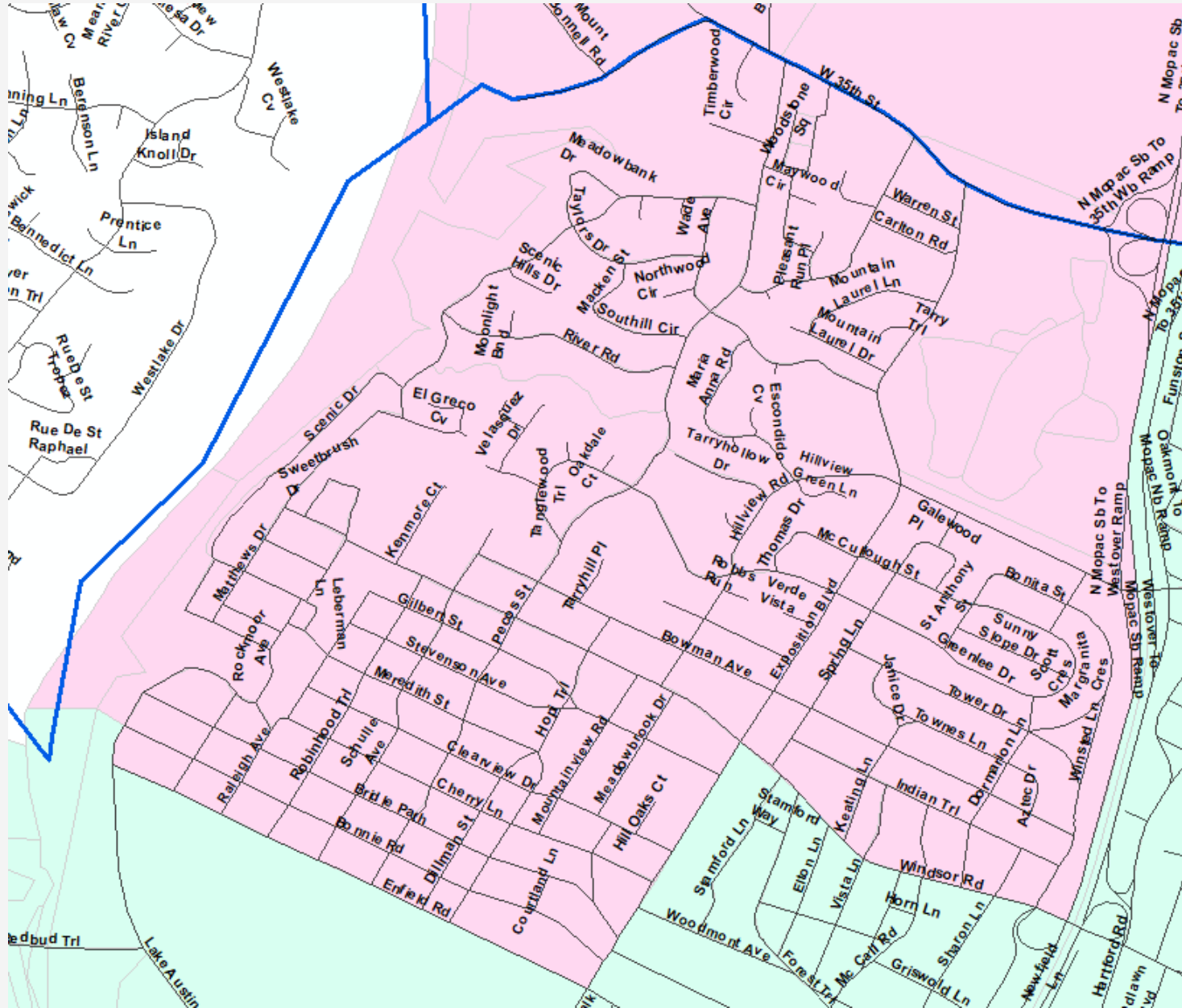
— Current Boundary

Plan 1 vs. Current – SMD 5



Current Boundary

Plan 1 vs. Current – SMD 5



Current Boundary

District 5 – Plan Comparison

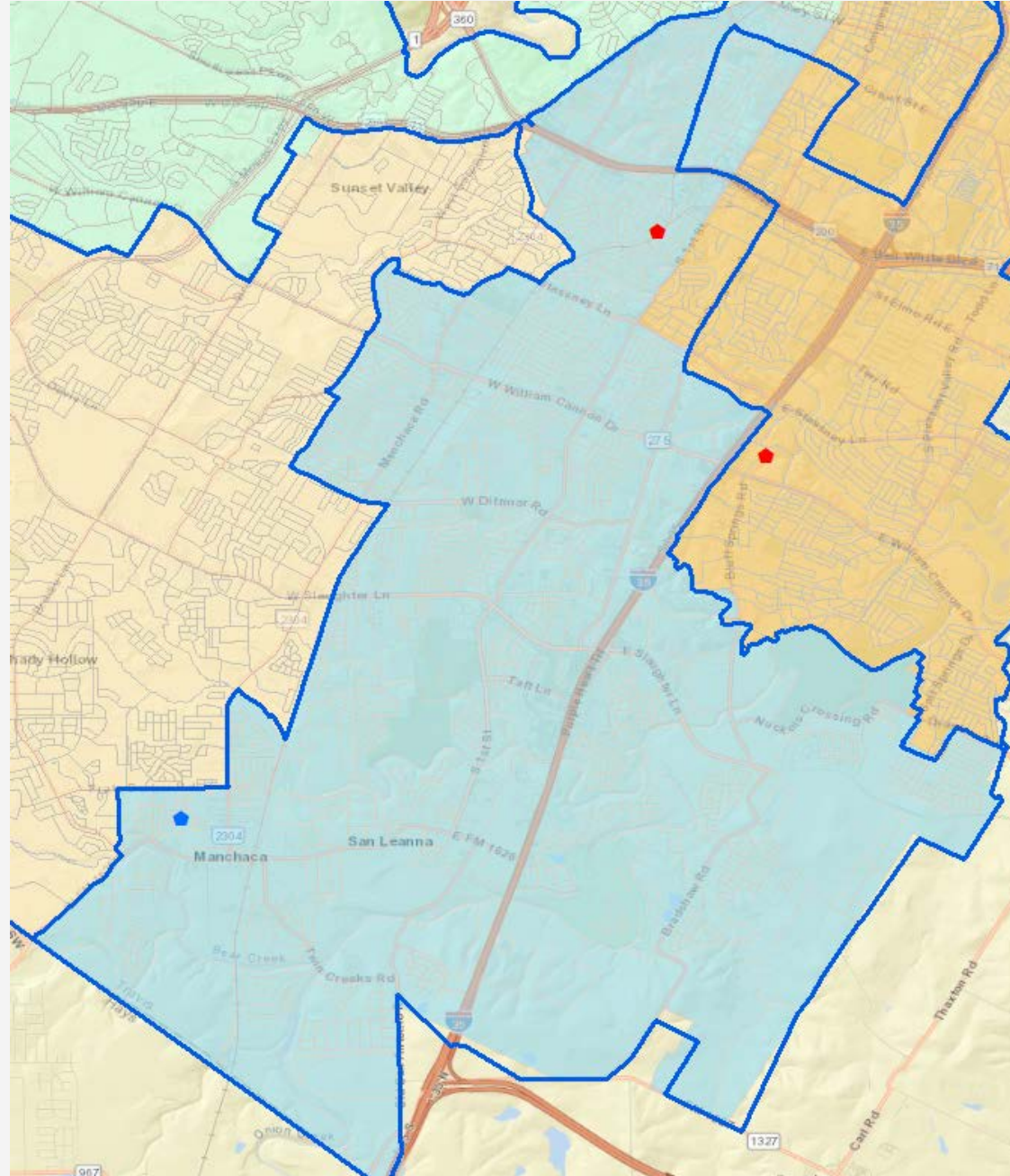
DISTRICT 5 - Plan Comparison			
Category	2010 Census Totals	2020 Census Totals	Plan 1
Population Totals			
Total Anglo Population	64,156	70,013	69,307
Total Asian Population	9,177	13,613	13,777
Total Black Population	2,304	3,331	3,390
Total Hispanic Population	12,184	17,266	17,742
Total Other Population	2,252	5,112	5,197
Total Population	90,073	109,335	109,413
Total Population Percentages			
Total Anglo Population	71.2%	64.0%	63.3%
Total Asian Population	10.2%	12.5%	12.6%
Total Black Population	2.6%	3.0%	3.1%
Total Hispanic Population	13.5%	15.8%	16.2%
Total Other Population	2.5%	4.7%	4.7%
Total Population	100.0%	100.0%	100.0%
Voting Age Population Percentages			
Total Anglo VAP	71.3%	64.4%	63.9%
Total Asian VAP	10.7%	13.0%	13.1%
Total Black VAP	2.6%	3.2%	3.2%
Total Hispanic VAP	13.1%	15.4%	15.7%
Total Other VAP	2.3%	4.1%	4.2%
Total VAP	100.0%	100.0%	100.0%
Citizen Voting Age Population Percentages			
Total Anglo CVAP	76.1%	71.4%	71.0%
Total Asian CVAP	N/A	7.5%	7.2%
Total Black CVAP	2.5%	4.3%	4.3%
Total Hispanic CVAP	12.6%	14.6%	15.3%
Total Other CVAP	8.8%	2.2%	2.2%
Total CVAP	100.0%	100.0%	100.0%

SOURCE: Total Population and Voting Age Population summarized from 2020 Census PL 94-171 Redistricting Data at the block level.

Citizen Voting Age Population (CVAP) data was extrapolated from 2010 Block Group Data using the 2015-2019 American Community Survey

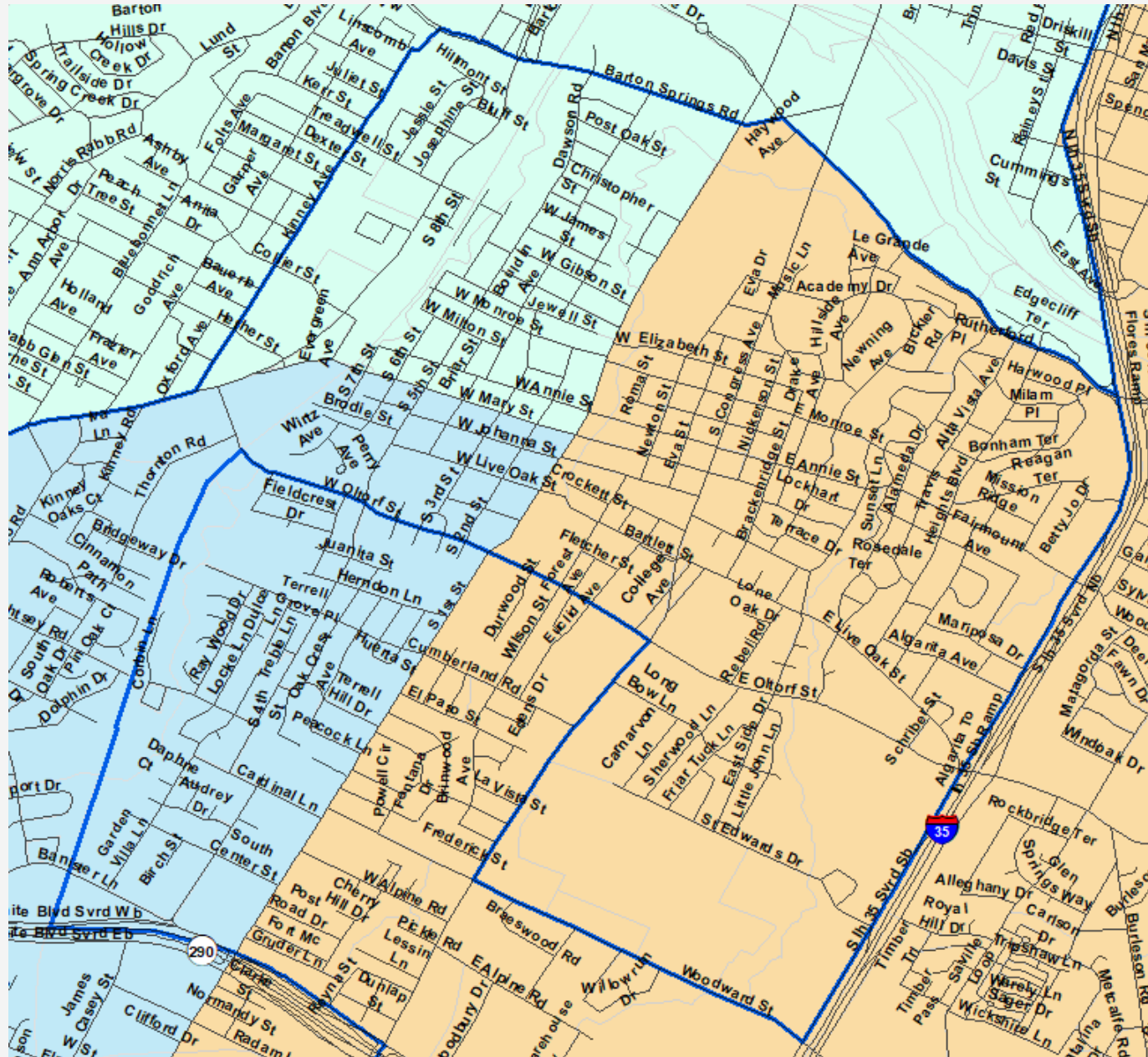
CVAP Change "Other" was calculated as follows:
 $(2020CVAP-Other+2020CVAP-Asian)-(2010CVAP-Other)$
 = **Other**

Plan 1 vs. Current – SMD 6



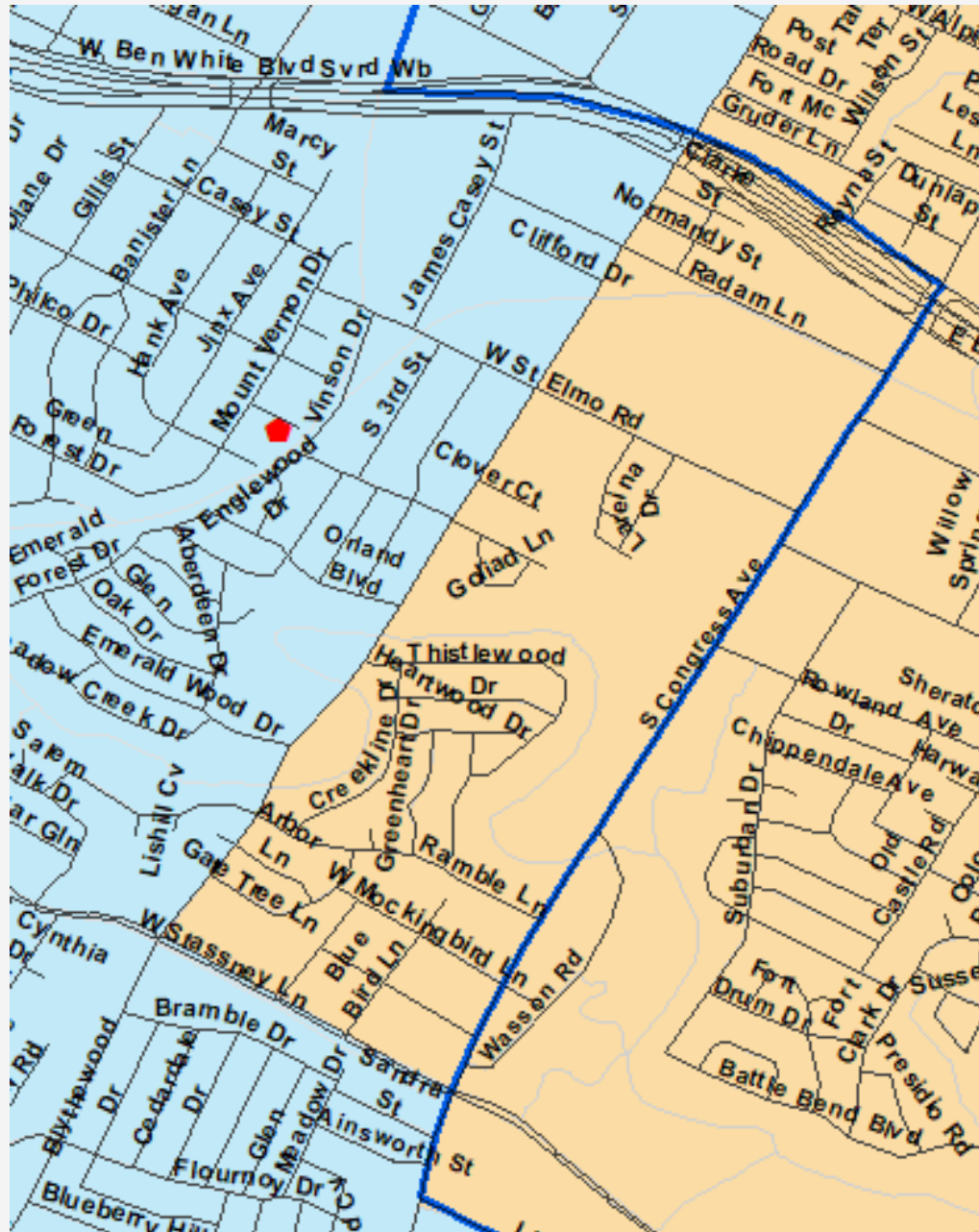
— Current Boundary

Plan 1 vs. Current – SMD 6



Current Boundary

Plan 1 vs. Current – SMD 6



Current Boundary

District 6 – Plan Comparison

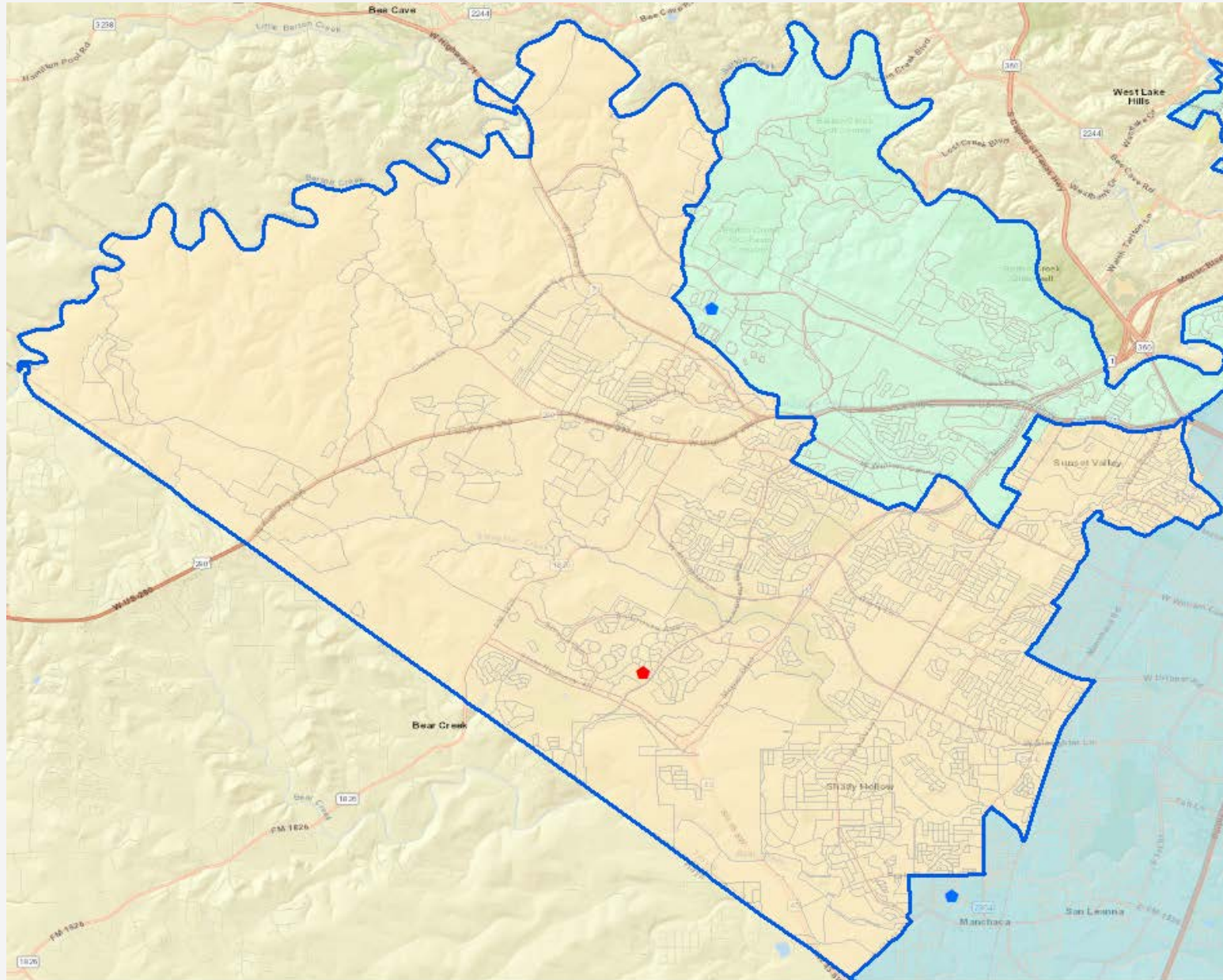
DISTRICT 6 - Plan Comparison			
Category	2010 Census Totals	2020 Census Totals	Plan 1
Population Totals			
Total Anglo Population	46,682	59,984	49,327
Total Asian Population	2,029	4,894	3,951
Total Black Population	4,378	6,544	5,947
Total Hispanic Population	38,938	47,251	43,417
Total Other Population	2,087	5,949	5,070
Total Population	94,114	124,622	107,712
Total Population Percentages			
Total Anglo Population	49.6%	48.1%	45.8%
Total Asian Population	2.2%	3.9%	3.7%
Total Black Population	4.7%	5.3%	5.5%
Total Hispanic Population	41.4%	37.9%	40.3%
Total Other Population	2.2%	4.8%	4.7%
Total Population	100.0%	100.0%	100.0%
Voting Age Population Percentages			
Total Anglo VAP	55.5%	51.7%	49.5%
Total Asian VAP	2.3%	4.1%	3.8%
Total Black VAP	4.3%	5.3%	5.6%
Total Hispanic VAP	36.0%	34.5%	36.7%
Total Other VAP	2.0%	4.4%	4.4%
Total VAP	100.0%	100.0%	100.0%
Citizen Voting Age Population Percentages			
Total Anglo CVAP	61.0%	58.5%	56.2%
Total Asian CVAP	N/A	2.3%	2.5%
Total Black CVAP	4.8%	5.2%	5.2%
Total Hispanic CVAP	30.1%	31.7%	33.9%
Total Other CVAP	4.1%	2.3%	2.2%
Total CVAP	100.0%	100.0%	100.0%

SOURCE: Total Population and Voting Age Population summarized from 2020 Census PL 94-171 Redistricting Data at the block level.

Citizen Voting Age Population (CVAP) data was extrapolated from 2010 Block Group Data using the 2015-2019 American Community Survey

CVAP Change "Other" was calculated as follows:
 $(2020CVAP-Other+2020CVAP-Asian)-(2010CVAP-Other)$
 = **Other**

Plan 1 vs. Current – SMD 7



— Current Boundary

District 7 – Plan Comparison

DISTRICT 7 - Plan Comparison			
Category	2010 Census Totals	2020 Census Totals	Plan 1
Population Totals			
Total Anglo Population	61,774	65,756	65,756
Total Asian Population	5,123	7,326	7,326
Total Black Population	2,779	2,954	2,954
Total Hispanic Population	21,523	25,440	25,440
Total Other Population	2,302	5,781	5,781
Total Population	93,501	107,257	107,257
Total Population Percentages			
Total Anglo Population	66.1%	61.3%	61.3%
Total Asian Population	5.5%	6.8%	6.8%
Total Black Population	3.0%	2.8%	2.8%
Total Hispanic Population	23.0%	23.7%	23.7%
Total Other Population	2.5%	5.4%	5.4%
Total Population	100.0%	100.0%	100.0%
Voting Age Population Percentages			
Total Anglo VAP	69.3%	63.7%	63.7%
Total Asian VAP	5.2%	6.8%	6.8%
Total Black VAP	3.0%	2.9%	2.9%
Total Hispanic VAP	20.7%	22.1%	22.1%
Total Other VAP	1.8%	4.5%	4.5%
Total VAP	100.0%	100.0%	100.0%
Citizen Voting Age Population Percentages			
Total Anglo CVAP	73.4%	68.5%	68.5%
Total Asian CVAP	N/A	4.0%	4.0%
Total Black CVAP	3.0%	3.7%	3.7%
Total Hispanic CVAP	18.8%	21.9%	21.9%
Total Other CVAP	4.8%	1.9%	1.9%
Total CVAP	100.0%	100.0%	100.0%

SOURCE: Total Population and Voting Age Population summarized from 2020 Census PL 94-171 Redistricting Data at the block level.

Citizen Voting Age Population (CVAP) data was extrapolated from 2010 Block Group Data using the 2015-2019 American Community Survey

CVAP Change "Other" was calculated as follows:
 $(2020CVAP-Other+2020CVAP-Asian)-(2010CVAP-Other)$
 = **Other**

Process & Timeline

Process & Timeline

- Hire a demographic and legal team – October 2021
- Team briefs Board on timelines/dates and process – November 11, 2021
- Board provides input on how to solicit board input & role of legal team— January 13
- Board provides input on how to solicit public input – January 13
 - Public hearings are a must
 - Soliciting input from minority leaders is a must
- Board reviews timeline – January 13

Process & Timeline

- Board receives Redistricting 101 Overview – February 10
- Team briefs Board on all relevant census, population, demographic and election data – February 10
- Board reviews public input proposal – February 10
- Public education materials released on website and in community – early March
- Board receives public input on redistricting criteria
 - Survey results on criteria on district website
 - Public comment at Board meetings
- Board adopts redistricting criteria – March 10
- Demographer drafts and presents initial proposed map based on statutory criteria to Board; Board and public provide input on initial proposed map – March 10

Process & Timeline

- Weekly meetings between legal & demographic team, Board President or other members, and district liaison – March through April
- Two virtual town halls for community – Monday, March 28 and Tuesday, April 12
- Survey on proposed map changes released on website and in community forums – mid- to late March
- Board and public provide input on initial proposed map – March 24
- Trustee-led community meetings in districts (virtual and in-person) – March, April, & May

Process & Timeline

- Legal and demographic team holds one-on-one meetings with Trustees – April & May
- Present three map options based on adopted criteria and community and Trustee input; Board and public provide input on three map options – April 14
- Present two map options based on continued community and Trustee input; Board and public provide input on two map options – April 28 or May 12
- Present proposed final map based on continued community and Trustee input; Board reviews written analysis of final plan which addresses how criteria met; Board and public provide input on proposed final map – May 12, May 26, or June 2

Process & Timeline

- Board adopts final plan through resolution – May 26, June 2, or June 16
- Additional Board meetings if needed– June 2 and June 16
- First day to file for place on ballot – July 23
- Deadline to adopt redistricting plan – August 10
- Deadline to file for a place on the ballot; deadline to order election – August 22
- Election Day – November 8



Two Virtual or Tele-Town Hall Meetings



Surveys



Educational Videos



Dedicated Redistricting Webpage



Interactive Map with Drawing Feature on AISD Website



Trustee-led Community Meetings for Each District



Engagement with Special Interest Groups

THANK YOU!

